

A19642

Leader in Biomolecular Solutions for Life Science



## ENTPD5 Rabbit mAb

Catalog No.: A19642

Recombinant

### Basic Information

#### Observed MW

48kDa

#### Calculated MW

48kDa

#### Category

SMab Recombinant Monoclonal Antibody

#### Applications

WB, ELISA

#### Cross-Reactivity

Mouse, Rat

#### CloneNo number

ARC2210

### Background

The protein encoded by this gene is similar to E-type nucleotidases (NTPases)/ecto-ATPase/apyrases. NTPases, such as CD39, mediate catabolism of extracellular nucleotides. ENTPD5 contains 4 apyrase-conserved regions which is characteristic of NTPases.

### Recommended Dilutions

WB 1:1000 - 1:5000

### Immunogen Information

#### Gene ID

957

#### Swiss Prot

O75356

#### Immunogen

Recombinant fusion protein containing a sequence corresponding to amino acids 300-400 of human ENTPD5 (O75356).

#### Synonyms

PCPH; CD39L4; NTPDase-5; ENTPD5

### Contact



[www.abclonal.com](http://www.abclonal.com)

### Product Information

#### Source

Rabbit

#### Isotype

IgG

#### Purification

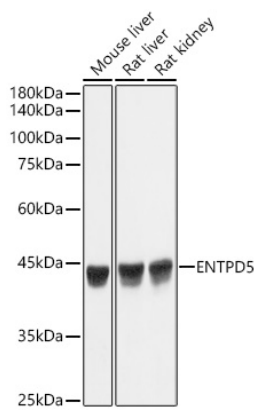
Affinity purification

#### Storage

Store at -20°C. Avoid freeze / thaw cycles.

Buffer: PBS with 0.02% sodium azide, 0.05% BSA, 50% glycerol, pH7.3.

# Validation Data



Western blot analysis of 293T, using ENTPD5 Rabbit mAb (A19642) at 1:1000 dilution. Secondary antibody: HRP Goat Anti-Rabbit IgG (H+L) (AS014) at 1:10000 dilution. Lysates/proteins: 25ug per lane. Blocking buffer: 3% nonfat dry milk in TBST. Detection: ECL Basic Kit (RM00020). Exposure time: 60s.

