

A19640

Leader in Biomolecular Solutions for Life Science



Calsequestrin 1 Rabbit mAb

Catalog No.: A19640

Recombinant

Basic Information

Observed MW

55kDa

Calculated MW

45kDa

Category

SMab Recombinant Monoclonal Antibody

Applications

WB,IF/ICC,ELISA

Cross-Reactivity

Mouse,Rat

CloneNo number

ARC2209

Background

This gene encodes the skeletal muscle specific member of the calsequestrin protein family. Calsequestrin functions as a luminal sarcoplasmic reticulum calcium sensor in both cardiac and skeletal muscle cells. This protein, also known as calmitine, functions as a calcium regulator in the mitochondria of skeletal muscle. This protein is absent in patients with Duchenne and Becker types of muscular dystrophy.

Recommended Dilutions

WB	1:500 - 1:1000
IF/ICC	1:50 - 1:200

Immunogen Information

Gene ID

844

Swiss Prot

P31415

Immunogen

Recombinant fusion protein containing a sequence corresponding to amino acids 100-200 of human Calsequestrin 1 (NP_001222.3).

Synonyms

CASQ; CSQ1; PDIB1; VMCQA; Calsequestrin 1

Contact



www.abclonal.com

Product Information

Source

Rabbit

Isotype

IgG

Purification

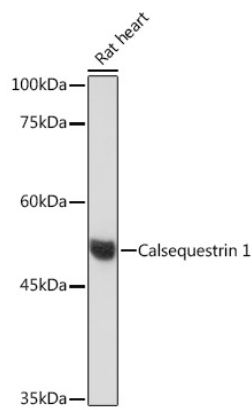
Affinity purification

Storage

Store at -20°C. Avoid freeze / thaw cycles.

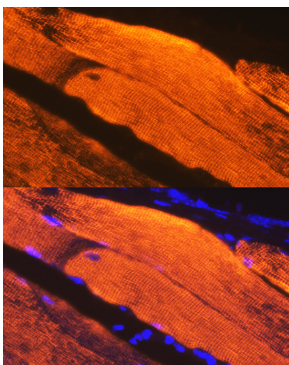
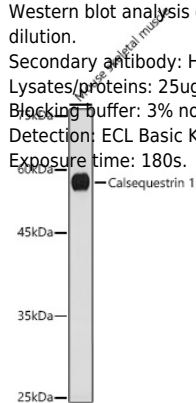
Buffer: PBS with 0.02% sodium azide,0.05% BSA,50% glycerol,pH7.3.

Validation Data

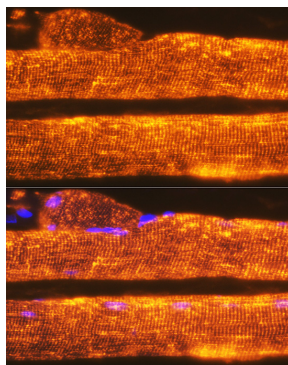


Western blot analysis of extracts of Rat heart, using Calsequestrin 1 Rabbit mAb (A19640) at 1:500 dilution.
 Secondary antibody: HRP Goat Anti-Rabbit IgG (H+L) (AS014) at 1:10000 dilution.
 Lysates/proteins: 25µg per lane.
 Blocking buffer: 3% nonfat dry milk in TBST.
 Detection: ECL Basic Kit (RM00020).
 Exposure time: 60s.

Western blot analysis of Mouse skeletal muscle, using Calsequestrin 1 Rabbit mAb (A19640) at 1:1000 dilution.
 Secondary antibody: HRP Goat Anti-Rabbit IgG (H+L) (AS014) at 1:10000 dilution.
 Lysates/proteins: 25ug per lane.
 Blocking buffer: 3% nonfat dry milk in TBST.
 Detection: ECL Basic Kit (RM00020).
 Exposure time: 180s.



Immunofluorescence analysis of Mouse skeletal muscle using Calsequestrin 1 antibody (A19640) at dilution of 1:100. Blue: DAPI for nuclear staining.



Immunofluorescence analysis of Rat skeletal muscle using Calsequestrin 1 antibody (A19640) at dilution of 1:100. Blue: DAPI for nuclear staining.