

A19622

Leader in Biomolecular Solutions for Life Science



## [KO Validated] HuR/ELAVL1 Rabbit mAb

Catalog No.: A19622

**KO** Validated

Recombinant

8 Publications

### Basic Information

#### Observed MW

36kDa

#### Calculated MW

36kDa

#### Category

SMab Recombinant Monoclonal Antibody

#### Applications

WB, IHC-P, IF/ICC, IP, ELISA

#### Cross-Reactivity

Human, Mouse, Rat

#### CloneNo number

ARC0101

### Background

The protein encoded by this gene is a member of the ELAVL family of RNA-binding proteins that contain several RNA recognition motifs, and selectively bind AU-rich elements (AREs) found in the 3' untranslated regions of mRNAs. AREs signal degradation of mRNAs as a means to regulate gene expression, thus by binding AREs, the ELAVL family of proteins play a role in stabilizing ARE-containing mRNAs. This gene has been implicated in a variety of biological processes and has been linked to a number of diseases, including cancer. It is highly expressed in many cancers, and could be potentially useful in cancer diagnosis, prognosis, and therapy.

### Recommended Dilutions

WB	1:500 - 1:1000
IHC-P	1:50 - 1:200
IF/ICC	1:50 - 1:200
IP	0.5µg-4µg antibody for 200µg-400µg extracts of whole cells

### Immunogen Information

#### Gene ID

1994

#### Swiss Prot

Q15717

#### Immunogen

A synthetic peptide corresponding to a sequence within amino acids 1-100 of human HuR/ELAVL1 (Q15717).

#### Synonyms

HUR; Hua; MelG; ELAV1; L1

### Contact



[www.abclonal.com](http://www.abclonal.com)

### Product Information

#### Source

Rabbit

#### Isotype

IgG

#### Purification

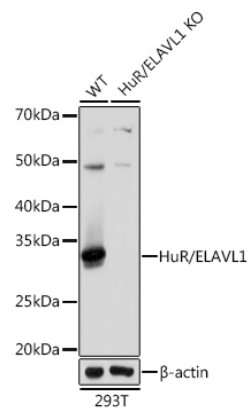
Affinity purification

#### Storage

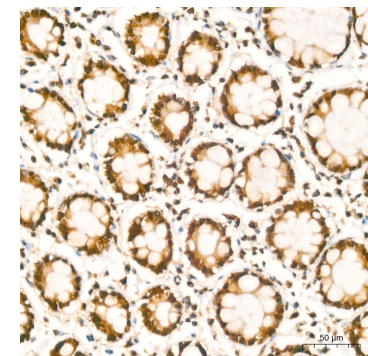
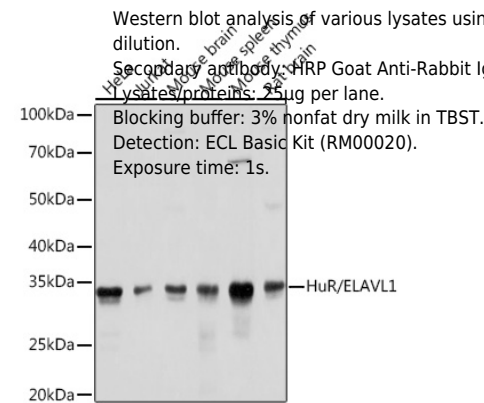
Store at -20°C. Avoid freeze / thaw cycles.

Buffer: PBS with 0.02% sodium azide, 0.05% BSA, 50% glycerol, pH7.3.

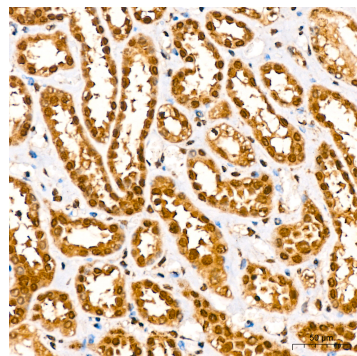
Validation Data



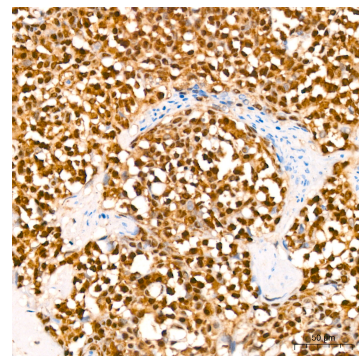
Western blot analysis of lysates from wild type (WT) and HuR/ELAVL1 knockout (KO) 293T cells, using [KO Validated] HuR/ELAVL1 Rabbit mAb (A19622) at 1:1000 dilution.  
Secondary antibody: HRP Goat Anti-Rabbit IgG (H+L) (AS014) at 1:10000 dilution.  
Lysates/proteins: 25µg per lane.  
Blocking buffer: 3% nonfat dry milk in TBST.  
Detection: ECL Basic Kit (RM00020).  
Exposure time: 1s.



Immunohistochemistry analysis of HuR/ELAVL1 in paraffin-embedded human colon carcinoma using [KO Validated] HuR/ELAVL1 Rabbit mAb (A19622) at dilution of 1:200 (40x lens).Perform high pressure antigen retrieval with 10 mM citrate buffer pH 6.0 before commencing with IHC staining protocol.

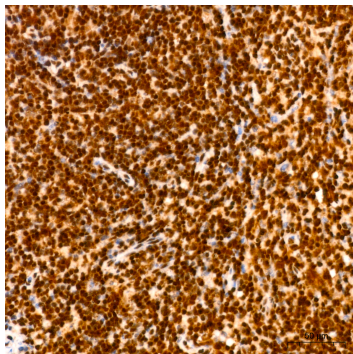


Immunohistochemistry analysis of HuR/ELAVL1 in paraffin-embedded human kidney using [KO Validated] HuR/ELAVL1 Rabbit mAb (A19622) at dilution of 1:200 (40x lens).Perform high pressure antigen retrieval with 10 mM citrate buffer pH 6.0 before commencing with IHC staining protocol.

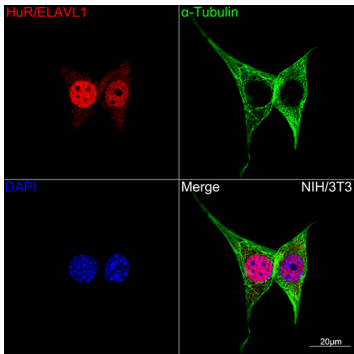


Immunohistochemistry analysis of HuR/ELAVL1 in paraffin-embedded human tonsil using [KO Validated] HuR/ELAVL1 Rabbit mAb (A19622) at dilution of 1:200 (40x lens).Perform high pressure antigen retrieval with 10 mM citrate buffer pH 6.0 before commencing with IHC staining protocol.

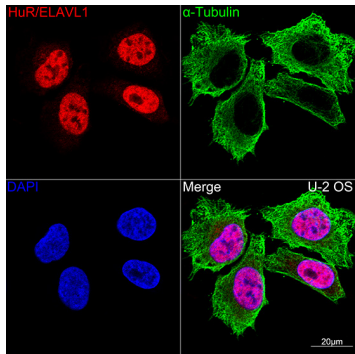
Validation Data



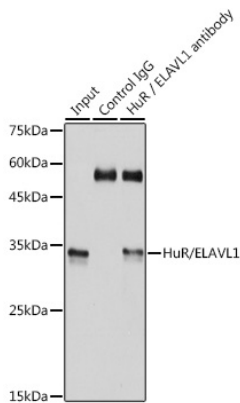
Immunohistochemistry analysis of HuR/ELAVL1 in paraffin-embedded mouse spleen using [KO Validated] HuR/ELAVL1 Rabbit mAb (A19622) at dilution of 1:200 (40x lens). Perform high pressure antigen retrieval with 10 mM citrate buffer pH 6.0 before commencing with IHC staining protocol.



Confocal imaging of NIH/3T3 cells using [KO Validated] HuR/ELAVL1 Rabbit mAb (A19622, dilution 1:100) (Red). The cells were counterstained with α-Tubulin Mouse mAb (AC012, dilution 1:400) (Green). DAPI was used for nuclear staining (blue). Objective: 100x.



Confocal imaging of U-2 OS cells using [KO Validated] HuR/ELAVL1 Rabbit mAb (A19622, dilution 1:100) (Red). The cells were counterstained with α-Tubulin Mouse mAb (AC012, dilution 1:400) (Green). DAPI was used for nuclear staining (blue). Objective: 100x.



Immunoprecipitation analysis of 300 μg extracts of 293T cells using 3 μg HuR/ELAVL1 antibody (A19622). Western blot was performed from the immunoprecipitate using HuR/ELAVL1 antibody (A19622) at a dilution of 1:1000.