

A1962

Leader in Biomolecular Solutions for Life Science



## CD146/MCAM Rabbit pAb

Catalog No.: A1962

### Basic Information

**Observed MW**

120kDa

**Calculated MW**

72kDa

**Category**

Polyclonal Antibody

**Applications**

WB, ELISA

**Cross-Reactivity**

Human, Mouse, Rat

### Background

Involved in glomerular filtration and vascular wound healing. Acts upstream of or within angiogenesis. Located in external side of plasma membrane. Biomarker of chronic obstructive pulmonary disease and uveal melanoma.

### Recommended Dilutions

WB 1:500 - 1:1000

### Immunogen Information

**Gene ID**

4162

**Swiss Prot**

P43121

**Immunogen**

Recombinant fusion protein containing a sequence corresponding to amino acids 447-646 of human CD146/CD146/MCAM (NP\_006491.2).

**Synonyms**

CD146; MUC18; HEMCAM; METCAM; MeICAM; CD146/MCAM

### Contact



[www.abclonal.com](http://www.abclonal.com)

### Product Information

**Source**

Rabbit

**Isotype**

IgG

**Purification**

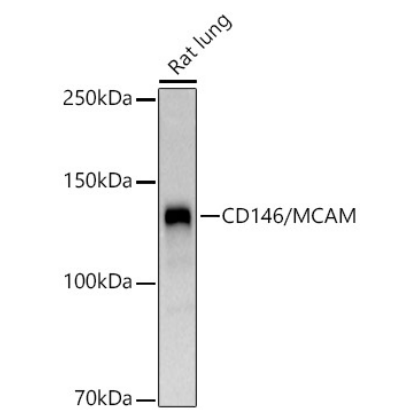
Affinity purification

**Storage**

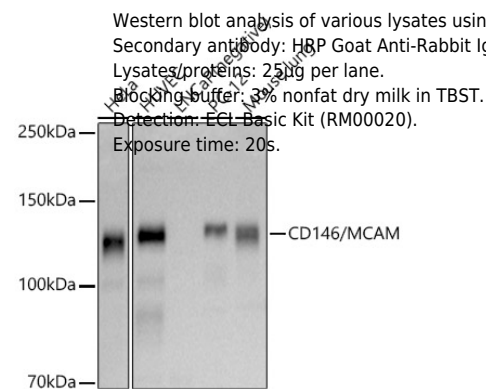
Store at -20°C. Avoid freeze / thaw cycles.

Buffer: PBS with 0.02% sodium azide, 50% glycerol, pH 7.3.

Validation Data



Western blot analysis of lysates from Rat lung, using CD146/MCAM Rabbit pAb (A1962) at 1:1000 dilution.  
Secondary antibody: HRP Goat Anti-Rabbit IgG (H+L) (AS014) at 1:10000 dilution.  
Lysates/proteins: 25µg per lane.  
Blocking buffer: 3% nonfat dry milk in TBST.  
Detection: ECL Basic Kit (RM00020).  
Exposure time: 90s.



Western blot analysis of various lysates using CD146/MCAM Rabbit pAb (A1962) at 1:1000 dilution.  
Secondary antibody: HRP Goat Anti-Rabbit IgG (H+L) (AS014) at 1:10000 dilution.  
Lysates/proteins: 25µg per lane.  
Blocking buffer: 3% nonfat dry milk in TBST.  
Detection: ECL Basic Kit (RM00020).  
Exposure time: 20s.