

A19604

Leader in Biomolecular Solutions for Life Science



[KD Validated] ATG7 Rabbit mAb

Catalog No.: A19604

Recombinant

7 Publications

Basic Information

Observed MW

77kDa

Calculated MW

78kDa

Category

SMab Recombinant Monoclonal Antibody

Applications

WB, IHC-P, IP, ELISA

Cross-Reactivity

Human, Mouse, Rat

CloneNo number

ARC0083

Background

This gene encodes an E1-like activating enzyme that is essential for autophagy and cytoplasmic to vacuole transport. The encoded protein is also thought to modulate p53-dependent cell cycle pathways during prolonged metabolic stress. It has been associated with multiple functions, including axon membrane trafficking, axonal homeostasis, mitophagy, adipose differentiation, and hematopoietic stem cell maintenance. Alternative splicing results in multiple transcript variants.

Recommended Dilutions

WB 1:500 - 1:2000

IHC-P 1:50 - 1:200

IP 0.5µg-4µg antibody for
200µg-400µg extracts of
whole cells

Immunogen Information

Gene ID

10533

Swiss Prot

O95352

Immunogen

A synthetic peptide corresponding to a sequence within amino acids 1-100 of human Atg7(Apg7) (O95352).

Synonyms

GSA7; [KD Validated] ATG7

Contact



www.abclonal.com

Product Information

Source

Rabbit

Isotype

IgG

Purification

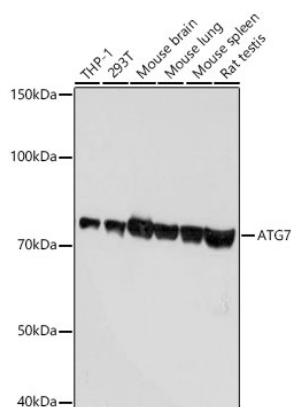
Affinity purification

Storage

Store at -20°C. Avoid freeze / thaw cycles.

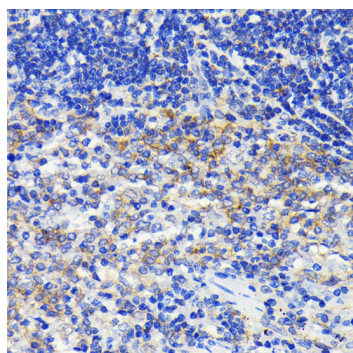
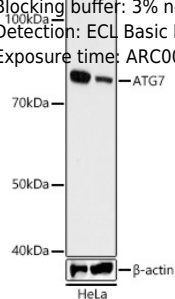
Buffer: PBS with 0.02% sodium azide, 0.05% BSA, 50% glycerol, pH7.3.

Validation Data

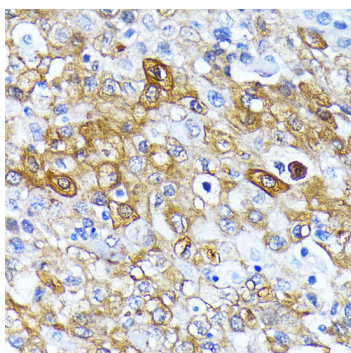


Western blot analysis of various lysates using [KD Validated] ATG7 Rabbit mAb (A19604) at 1:1000 dilution.
 Secondary antibody: HRP Goat Anti-Rabbit IgG (H+L) (AS014) at 1:10000 dilution.
 Lysates/proteins: 25µg per lane.
 Blocking buffer: 3% nonfat dry milk in TBST.
 Detection: ECL Basic Kit (RM00020).
 Exposure time: 10s.

Western blot analysis of lysates from wild type(WT) and ATG7 knockdown (KD) HeLa cells, using [KD Validated] ATG7 Rabbit mAb (A19604) at 1:1000 dilution.
 Secondary antibody: HRP Goat Anti-Rabbit IgG (H+L) (AS014) at 1:10000 dilution.
 Lysates/proteins: 25µg per lane.
 Blocking buffer: 3% nonfat dry milk in TBST.
 Detection: ECL Basic Kit (RM00020).
 Exposure time: ARC0083.



Immunohistochemistry analysis of ATG7 in paraffin-embedded rat spleen using [KD Validated] ATG7 Rabbit mAb (A19604) at dilution of 1:100 (40x lens). Perform microwave antigen retrieval with 10 mM PBS buffer pH 7.2 before commencing with IHC staining protocol.



Immunohistochemistry analysis of ATG7 in paraffin-embedded human esophageal cancer using [KD Validated] ATG7 Rabbit mAb (A19604) at dilution of 1:100 (40x lens). Perform microwave antigen retrieval with 10 mM PBS buffer pH 7.2 before commencing with IHC staining protocol.