

A19580

Leader in Biomolecular Solutions for Life Science



## RIPK1/RIP Rabbit mAb

Catalog No.: A19580

Recombinant

9 Publications

### Basic Information

#### Observed MW

75kDa

#### Calculated MW

76kDa

#### Category

SMab Recombinant Monoclonal Antibody

#### Applications

WB,IP,ELISA

#### Cross-Reactivity

Human

#### CloneNo number

ARC0059

### Background

This gene encodes a member of the receptor-interacting protein (RIP) family of serine/threonine protein kinases. The encoded protein plays a role in inflammation and cell death in response to tissue damage, pathogen recognition, and as part of developmental regulation. RIPK1/RIPK3 kinase-mediated necrosis is referred to as necroptosis. Genetic disruption of this gene in mice results in death shortly after birth.

### Recommended Dilutions

WB 1:500 - 1:1000

IP 0.5µg-4µg antibody for  
200µg-400µg extracts of  
whole cells

### Immunogen Information

#### Gene ID

8737

#### Swiss Prot

Q13546

#### Immunogen

Recombinant fusion protein containing a sequence corresponding to amino acids 289-490 of human RIPK1/RIP (NP\_003795.2).

#### Synonyms

RIP; RIP1; AIEFL; IMD57; RIP-1; RIPK1/RIP

### Contact



[www.abclonal.com](http://www.abclonal.com)

### Product Information

#### Source

Rabbit

#### Isotype

IgG

#### Purification

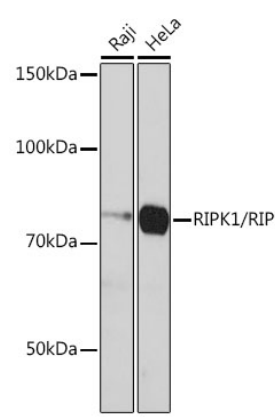
Affinity purification

#### Storage

Store at -20°C. Avoid freeze / thaw cycles.

Buffer: PBS with 0.02% sodium azide, 0.05% BSA, 50% glycerol, pH7.3.

Validation Data



Western blot analysis of various lysates using RIPK1/RIP Rabbit mAb (A19580) at 1:1000 dilution.  
Secondary antibody: HRP Goat Anti-Rabbit IgG (H+L) (AS014) at 1:10000 dilution.  
Lysates/proteins: 25µg per lane.  
Blocking buffer: 3% nonfat dry milk in TBST.  
Detection: ECL Basic Kit (RM00020).  
Exposure time: 3min.

Immunoprecipitation analysis of 300 µg extracts from HeLa cells using 3 µg RIPK1/RIP Rabbit mAb (A19580). Western blot was performed from the immunoprecipitate using RIPK1/RIP Rabbit mAb (A19580) at a dilution of 1:500.

