

TRIM21/SS-A Rabbit pAb

Catalog No.: A1957 **4 Publications**

Basic Information

Observed MW

50kDa/

Calculated MW

54kDa

Category

Primary antibody

Applications

ELISA, WB, IHC-P, IF/ICC, IP

Cross-Reactivity

Human, Mouse, Rat

Background

This gene encodes a member of the tripartite motif (TRIM) family. The TRIM motif includes three zinc-binding domains, a RING, a B-box type 1 and a B-box type 2, and a coiled-coil region. The encoded protein is part of the RoSSA ribonucleoprotein, which includes a single polypeptide and one of four small RNA molecules. The RoSSA particle localizes to both the cytoplasm and the nucleus. RoSSA interacts with autoantigens in patients with Sjogren syndrome and systemic lupus erythematosus. Alternatively spliced transcript variants for this gene have been described but the full-length nature of only one has been determined.

Recommended Dilutions

WB	1:500 - 1:1000
IHC-P	1:50 - 1:200
IF/ICC	1:50 - 1:200
IP	0.5µg-4µg antibody for 200µg-400µg extracts of whole cells

Immunogen Information

Gene ID	Swiss Prot
6737	P19474

Immunogen

Recombinant fusion protein containing a sequence corresponding to amino acids 86-334 of human TRIM21/SS-A (NP_003132.2).

Synonyms

SSA; RO52; SSA1; RNF81; Ro/SSA; TRIM21/SS-A

Contact

 | www.abclonal.com

Product Information

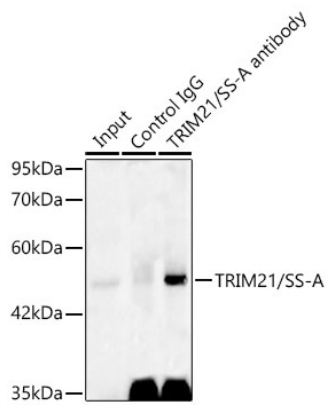
Source	Isotype	Purification
Rabbit	IgG	Affinity purification

Storage

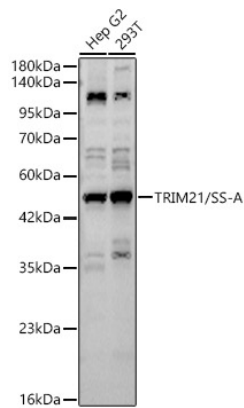
Store at -20°C. Avoid freeze / thaw cycles.

Buffer: PBS with 0.05% proclin300, 50% glycerol, pH7.3.

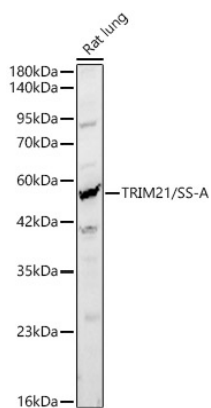
Validation Data



Immunoprecipitation of TRIM21/SS-A in 200 µg extracts from Hep G2 cells using 0.5 µg TRIM21/SS-A Rabbit pAb (A1957). Western blot analysis was performed using TRIM21/SS-A Rabbit pAb (A1957) at 1:1500 dilution.

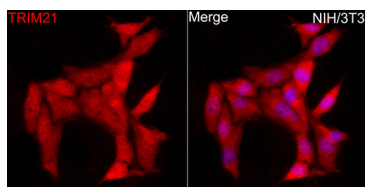


Western blot analysis of various lysates using TRIM21/SS-A Rabbit pAb (A1957) at 1:1000 dilution. Secondary antibody:HRP Goat Anti-Rabbit IgG (H+L)(A5014) at 1:10000 dilution. Lysates / proteins: 25 µg per lane. Blocking buffer: 3 % nonfat dry milk in TBST. Detection:ECL Basic Kit (RM00020). Exposuretime: 90s.

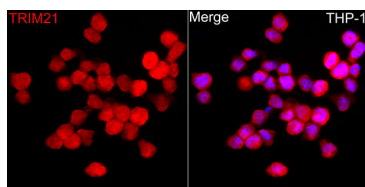


Western blot analysis of lysates from Rat lung using TRIM21/SS-A Rabbit pAb(A1957) at 1:1000 dilution. Secondary antibody:HRP Goat Anti-Rabbit IgG (H+L)(A5014) at 1:10000 dilution. Lysates/proteins: 25 µg per lane. Blocking buffer: 3% nonfat dry milk in TBST. Detection:ECL Basic Kit (RM00020). Exposuretime:180s.

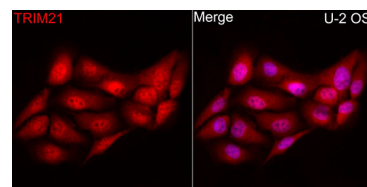
Validation Data



Immunofluorescence analysis of NIH/3T3 cells using TRIM21/SS-A Rabbit pAb (A1957) at dilution of 1:100 (40x lens). Secondary antibody: Cy3 Goat Anti-Rabbit IgG (H+L) (AS007) at 1:500 dilution. Blue: DAPI for nuclear staining.



Immunofluorescence analysis of THP-1 cells using TRIM21/SS-A Rabbit pAb (A1957) at dilution of 1:100 (40x lens). Secondary antibody: Cy3 Goat Anti-Rabbit IgG (H+L) (AS007) at 1:500 dilution. Blue: DAPI for nuclear staining.



Immunofluorescence analysis of U2OS cells using TRIM21/SS-A Rabbit pAb (A1957) at dilution of 1:100 (40x lens). Secondary antibody: Cy3 Goat Anti-Rabbit IgG (H+L) (AS007) at 1:500 dilution. Blue: DAPI for nuclear staining.