

A19565

Leader in Biomolecular Solutions for Life Science



MEK1 Rabbit mAb

Catalog No.: A19565

Recombinant

1 Publications

Basic Information

Observed MW

45kDa

Calculated MW

43kDa

Category

SMab Recombinant Monoclonal Antibody

Applications

WB,IF/ICC,IP,ELISA

Cross-Reactivity

Human,Mouse,Rat

CloneNo number

ARC0044

Background

The protein encoded by this gene is a member of the dual specificity protein kinase family, which acts as a mitogen-activated protein (MAP) kinase kinase. MAP kinases, also known as extracellular signal-regulated kinases (ERKs), act as an integration point for multiple biochemical signals. This protein kinase lies upstream of MAP kinases and stimulates the enzymatic activity of MAP kinases upon wide variety of extra- and intracellular signals. As an essential component of MAP kinase signal transduction pathway, this kinase is involved in many cellular processes such as proliferation, differentiation, transcription regulation and development.

Recommended Dilutions

WB 1:500 - 1:2000

IF/ICC 1:50 - 1:200

IP 0.5µg-4µg antibody for
400µg-600µg extracts of
whole cells

Immunogen Information

Gene ID

5604

Swiss Prot

Q02750

Immunogen

A synthetic peptide corresponding to a sequence within amino acids 1-100 of human MEK1 (Q02750).

Synonyms

MEL; CFC3; MEK1; MKK1; MAPKK1; PRKMK1

Contact



www.abclonal.com

Product Information

Source

Rabbit

Isotype

IgG

Purification

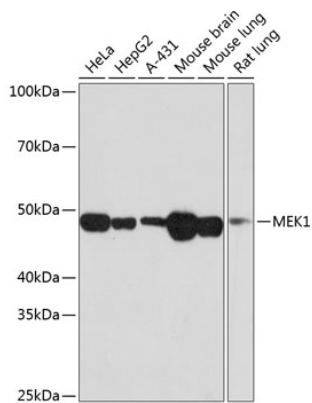
Affinity purification

Storage

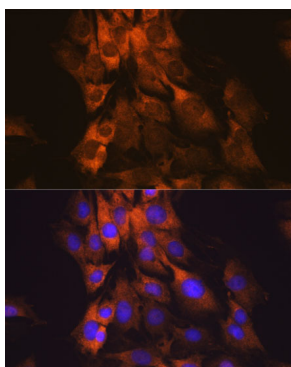
Store at -20°C. Avoid freeze / thaw cycles.

Buffer: PBS with 0.02% sodium azide,0.05% BSA,50% glycerol,pH7.3.

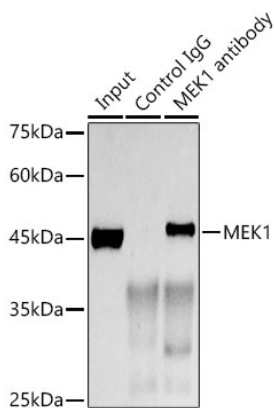
Validation Data



Western blot analysis of various lysates using MEK1 Rabbit mAb (A19565) at 1:1000 dilution.
 Secondary antibody: HRP Goat Anti-Rabbit IgG (H+L) (AS014) at 1:10000 dilution.
 Lysates/proteins: 25µg per lane.
 Blocking buffer: 3% nonfat dry milk in TBST.
 Detection: ECL Basic Kit (RM00020).
 Exposure time: 1min.



Immunofluorescence analysis of C6 cells using MEK1 Rabbit mAb (A19565).
 Secondary antibody: Cy3 Goat Anti-Rabbit IgG (H+L) (AS007) at 1:500 dilution. Blue: DAPI for nuclear staining.



Immunoprecipitation analysis of 600 µg extracts of Mouse brain using 3 µg MEK1 antibody (A19565).
 Western blot was performed from the immunoprecipitate using MEK1 (A19565) at a dilution of 1:1000.