

A19543

Leader in Biomolecular Solutions for Life Science



## Chk2 Rabbit mAb

Catalog No.: A19543

Recombinant

5 Publications

### Basic Information

#### Observed MW

65kDa

#### Calculated MW

15-38kDa/50-65kDa

#### Category

SMab Recombinant Monoclonal Antibody

#### Applications

WB,IHC-P,ELISA

#### Cross-Reactivity

Human,Mouse

#### CloneNo number

ARC57076

### Background

In response to DNA damage and replication blocks, cell cycle progression is halted through the control of critical cell cycle regulators. The protein encoded by this gene is a cell cycle checkpoint regulator and putative tumor suppressor. It contains a forkhead-associated protein interaction domain essential for activation in response to DNA damage and is rapidly phosphorylated in response to replication blocks and DNA damage. When activated, the encoded protein is known to inhibit CDC25C phosphatase, preventing entry into mitosis, and has been shown to stabilize the tumor suppressor protein p53, leading to cell cycle arrest in G1. In addition, this protein interacts with and phosphorylates BRCA1, allowing BRCA1 to restore survival after DNA damage. Mutations in this gene have been linked with Li-Fraumeni syndrome, a highly penetrant familial cancer phenotype usually associated with inherited mutations in TP53. Also, mutations in this gene are thought to confer a predisposition to sarcomas, breast cancer, and brain tumors. This nuclear protein is a member of the CDS1 subfamily of serine/threonine protein kinases. Several transcript variants encoding different isoforms have been found for this gene.

### Recommended Dilutions

WB	1:2000 - 1:8000
IHC-P	1:100 - 1:500

### Immunogen Information

#### Gene ID

11200

#### Swiss Prot

O96017

#### Immunogen

A synthetic peptide corresponding to a sequence within amino acids 1-100 of human Chk2 (O96017).

#### Synonyms

CDS1; CHK2; LFS2; RAD53; hCds1; HuCds1; PP1425; Chk2

### Contact



[www.abclonal.com](http://www.abclonal.com)

### Product Information

#### Source

Rabbit

#### Isotype

IgG

#### Purification

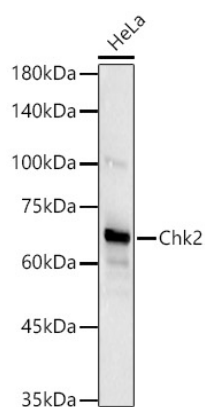
Affinity purification

#### Storage

Store at -20°C. Avoid freeze / thaw cycles.

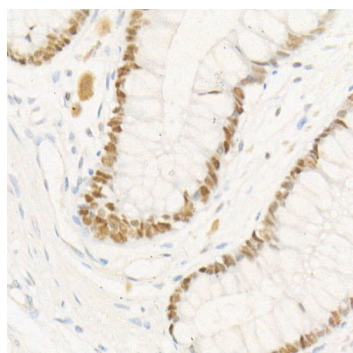
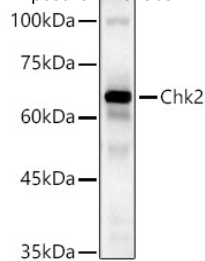
Buffer: PBS with 0.05% proclin300,0.05% BSA,50% glycerol,pH7.3.

## Validation Data

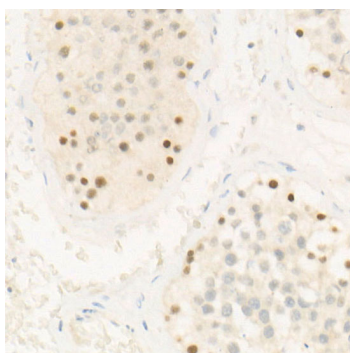


Western blot analysis of lysates from HeLa cells, using Chk2 Rabbit mAb (A19543) at 1:7000 dilution.  
Secondary antibody: HRP Goat Anti-Rabbit IgG (H+L) (A5014) at 1:10000 dilution.  
Lysates/proteins: 25µg per lane.  
Blocking buffer: 3% nonfat dry milk in TBST.  
Detection: ECL Basic Kit (RM00020).  
Exposure time: 90s.

Western blot analysis of lysates from C2C12 cells, using Chk2 Rabbit mAb (A19543) at 1:7000 dilution.  
Secondary antibody: HRP Goat Anti-Rabbit IgG (H+L) (A5014) at 1:10000 dilution.  
Lysates/proteins: 25µg per lane.  
Blocking buffer: 3% nonfat dry milk in TBST.  
Detection: ECL Basic Kit (RM00020).  
Exposure time: 90s.



Immunohistochemistry analysis of Chk2 in paraffin-embedded human colon using Chk2 Rabbit mAb (A19543) at dilution of 1:300 (40x lens). Perform high pressure antigen retrieval with 10 mM citrate buffer pH 6.0 before commencing with IHC staining protocol.



Immunohistochemistry analysis of Chk2 in paraffin-embedded human testis using Chk2 Rabbit mAb (A19543) at dilution of 1:300 (40x lens). Perform high pressure antigen retrieval with 10 mM citrate buffer pH 6.0 before commencing with IHC staining protocol.