

## [KO Validated] Lamin A/C Rabbit mAb

<b>Catalog No.</b>	A19524	<b>Category</b>	Monoclonal Antibodies
<b>Applications</b>	WB, IHC, IF, IP	<b>Observed MW</b>	62kDa/74kDa
<b>Cross-reactivity</b>	Human, Mouse, Rat	<b>Calculated MW</b>	62-74kDa

### Immunogen Information

<b>Immunogen</b>	Recombinant protein of human Lamin A/C.
<b>Gene ID</b>	4000
<b>Swiss prot</b>	P02545
<b>Synonyms</b>	LMNA;CDDC1;CDDC;CMD1A;CMT2B1;EMD2;FPL;FPLD;FPLD2;HGPS;IDC;LDP1;LFP;LGMD1B;LMN1;LMNC;LMNL1;MA DA;PRO1;lamin;Lamin A/C

### Product information

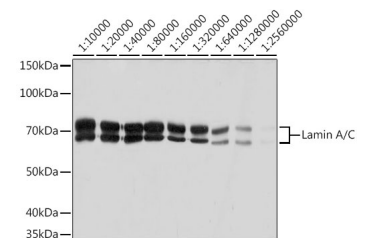
<b>Source</b>	Rabbit
<b>Isotype</b>	IgG
<b>Purification method</b>	Affinity purification
<b>Storage</b>	Store at -20°C. Avoid freeze / thaw cycles. Buffer: PBS with 0.02% sodium azide, 50% glycerol, pH7.3.

### Background

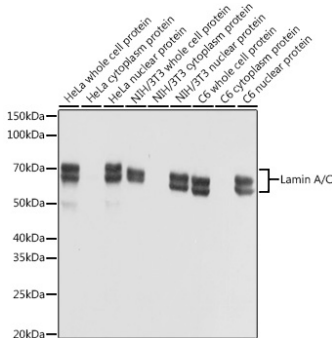
The nuclear lamina consists of a two-dimensional matrix of proteins located next to the inner nuclear membrane. The lamin family of proteins make up the matrix and are highly conserved in evolution. During mitosis, the lamina matrix is reversibly disassembled as the lamin proteins are phosphorylated. Lamin proteins are thought to be involved in nuclear stability, chromatin structure and gene expression. Vertebrate lamins consist of two types, A and B. Alternative splicing results in multiple transcript variants. Mutations in this gene lead to several diseases: Emery-Dreifuss muscular dystrophy, familial partial lipodystrophy, limb girdle muscular dystrophy, dilated cardiomyopathy, Charcot-Marie-Tooth disease, and Hutchinson-Gilford progeria syndrome.

### Recommended Dilutions

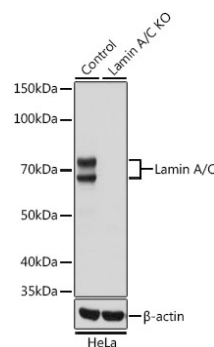
WB	1:50000 - 1:200000
IHC	1:50 - 1:1000
IF	1:50 - 1:1000
IP	1:50 - 1:200



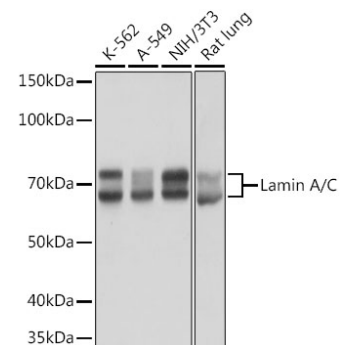
Western blot analysis of extracts of HeLa cells, using Lamin A/C antibody (A19524) at 1:10000-1:2560000 dilution.  
Secondary antibody: HRP Goat Anti-Rabbit IgG (H+L) (AS014) at 1:10000 dilution.  
Lysates/proteins: 25ug per lane.  
Blocking buffer: 3% nonfat dry milk in TBST.  
Detection: ECL Basic Kit (RM00020).  
Exposure time: 1s.



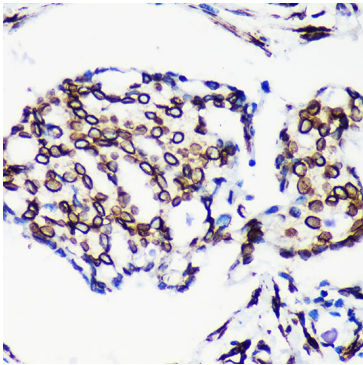
Western blot analysis of extracts of various cell lines, using Lamin A/C antibody (A19524) at 1:10000 dilution.  
Secondary antibody: HRP Goat Anti-Rabbit IgG (H+L) (AS014) at 1:10000 dilution.  
Lysates/proteins: 25ug per lane.  
Blocking buffer: 3% nonfat dry milk in TBST.  
Detection: ECL Basic Kit (RM00020).  
Exposure time: 1s.



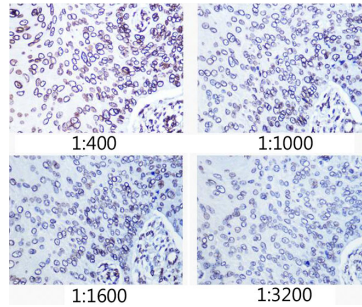
Western blot analysis of extracts from normal (control) and Lamin A/C knockout (KO) HeLa cells, using Lamin A/C antibody (A19524) at 1:50000 dilution.  
Secondary antibody: HRP Goat Anti-Rabbit IgG (H+L) (AS014) at 1:10000 dilution.  
Lysates/proteins: 25ug per lane.  
Blocking buffer: 3% nonfat dry milk in TBST.  
Detection: ECL Basic Kit (RM00020).  
Exposure time: 1s.



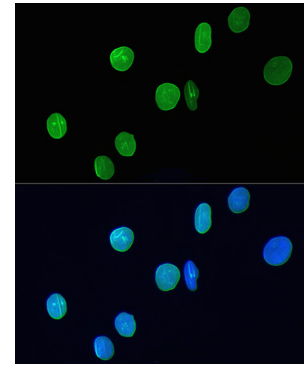
Western blot analysis of extracts of various cell lines, using Lamin A/C antibody (A19524) at 1:50000 dilution.  
Secondary antibody: HRP Goat Anti-Rabbit IgG (H+L) (AS014) at 1:10000 dilution.  
Lysates/proteins: 25ug per lane.  
Blocking buffer: 3% nonfat dry milk in TBST.  
Detection: ECL Basic Kit (RM00020).  
Exposure time: 1s.



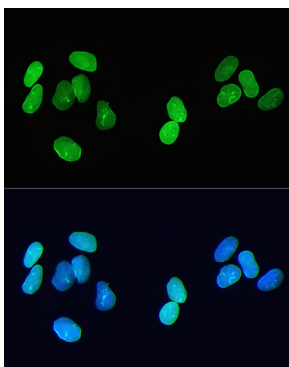
Immunohistochemistry of paraffin-embedded Human breast cancer using Lamin A/C antibody (A19524) at dilution of 1:200 (40x lens).



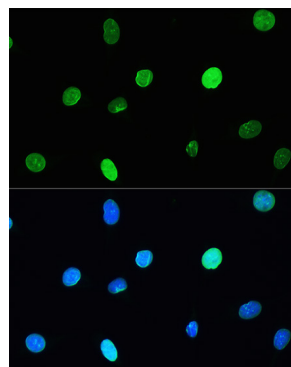
Immunohistochemistry of paraffin-embedded human esophageal cancer using Lamin A/C antibody (A19524) at dilution of 1:400 - 1:3200 (40x lens).



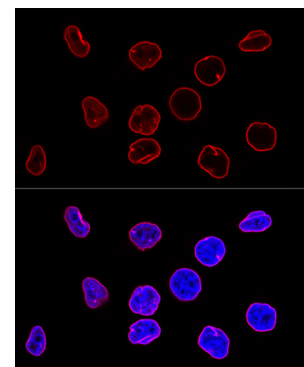
Immunofluorescence analysis of H9C2 cells using Lamin A/C antibody (A19524) at dilution of 1:200. Blue: DAPI for nuclear staining.



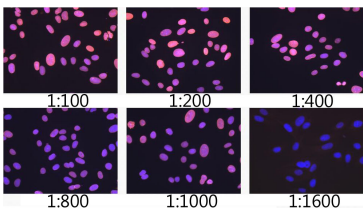
Immunofluorescence analysis of U2OS cells using Lamin A/C antibody (A19524) at dilution of 1:200. Blue: DAPI for nuclear staining.



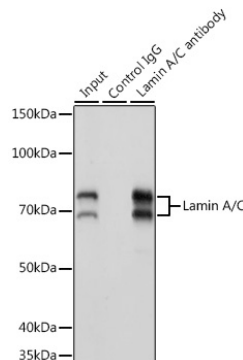
Immunofluorescence analysis of L929 cells using Lamin A/C antibody (A19524) at dilution of 1:200. Blue: DAPI for nuclear staining.



Confocal immunofluorescence analysis of HeLa cells using Lamin A/C antibody (A19524) at dilution of 1:100. Blue: DAPI for nuclear staining.



Immunofluorescence analysis of U2OS cells using Lamin A/C antibody (A19524) at dilution of 1:100 - 1:1600. Blue: DAPI for nuclear staining.



Immunoprecipitation analysis of 200ug extracts of K-562 cells using 3ug Lamin A/C antibody (A19524). Western blot was performed from the immunoprecipitate using Lamin A/C antibody (A19524) at a dilution of 1:20000.