

A1948

Leader in Biomolecular Solutions for Life Science



## ODC1 Rabbit pAb

Catalog No.: A1948

1 Publications

### Basic Information

#### Observed MW

51kDa

#### Calculated MW

51kDa

#### Category

Mouse Monoclonal Antibody

#### Applications

WB,IF/ICC,ELISA

#### Cross-Reactivity

Human,Mouse,Rat

### Background

This gene encodes the rate-limiting enzyme of the polyamine biosynthesis pathway which catalyzes ornithine to putrescine. The activity level for the enzyme varies in response to growth-promoting stimuli and exhibits a high turnover rate in comparison to other mammalian proteins. Originally localized to both chromosomes 2 and 7, the gene encoding this enzyme has been determined to be located on 2p25, with a pseudogene located on 7q31-qter. Multiple alternatively spliced transcript variants encoding distinct isoforms have been identified.

### Recommended Dilutions

WB	1:500 - 1:1000
IF/ICC	1:50 - 1:200

### Immunogen Information

#### Gene ID

4953

#### Swiss Prot

P11926

#### Immunogen

Recombinant fusion protein containing a sequence corresponding to amino acids 1-280 of human ODC1 (NP\_002530.1).

#### Synonyms

ODC; BABS; NEDBA; NEDBIA; ODC1

### Contact



[www.abclonal.com](http://www.abclonal.com)

### Product Information

#### Source

Rabbit

#### Isotype

IgG

#### Purification

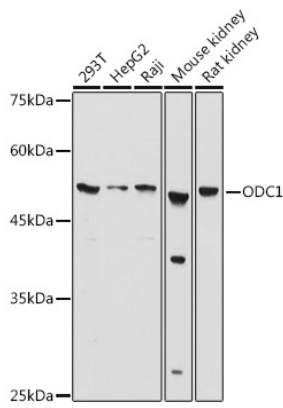
Affinity purification

#### Storage

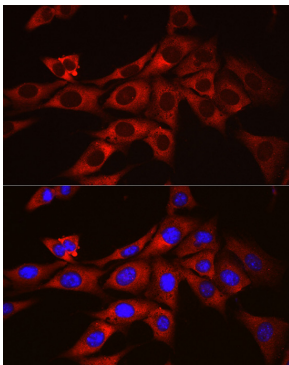
Store at -20°C. Avoid freeze / thaw cycles.

Buffer: PBS with 0.02% sodium azide,50% glycerol,pH7.3.

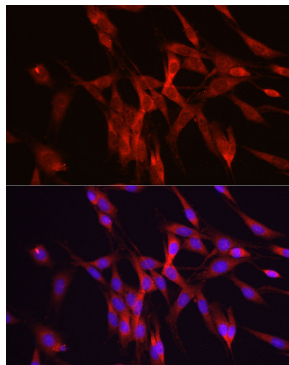
## Validation Data



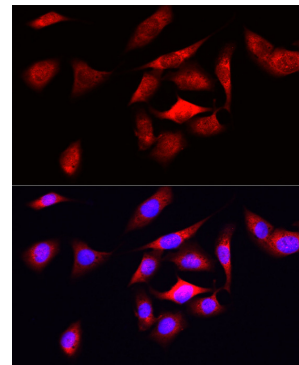
Western blot analysis of various lysates using ODC1 Rabbit pAb (A1948) at 1:1000 dilution.  
 Secondary antibody: HRP Goat Anti-Rabbit IgG (H+L) (AS014) at 1:10000 dilution.  
 Lysates/proteins: 25µg per lane.  
 Blocking buffer: 3% nonfat dry milk in TBST.  
 Detection: ECL Basic Kit (RM00020).  
 Exposure time: 10s.



Immunofluorescence analysis of NIH/3T3 cells using ODC1 Rabbit pAb (A1948) at dilution of 1:100 (40x lens). Secondary antibody: Cy3 Goat Anti-Rabbit IgG (H+L) (AS007) at 1:500 dilution. Blue: DAPI for nuclear staining.



Immunofluorescence analysis of PC-12 cells using ODC1 Rabbit pAb (A1948) at dilution of 1:50 (40x lens). Secondary antibody: Cy3 Goat Anti-Rabbit IgG (H+L) (AS007) at 1:500 dilution. Blue: DAPI for nuclear staining.



Immunofluorescence analysis of U2OS cells using ODC1 Rabbit pAb (A1948) at dilution of 1:50 (40x lens). Secondary antibody: Cy3 Goat Anti-Rabbit IgG (H+L) (AS007) at 1:500 dilution. Blue: DAPI for nuclear staining.