

A1934

Leader in Biomolecular Solutions for Life Science



[KD Validated] RAB27A Rabbit pAb

Catalog No.: A1934

4 Publications

Basic Information

Observed MW

27kDa

Calculated MW

25kDa

Category

Polyclonal Antibody

Applications

WB,IF/ICC,ELISA

Cross-Reactivity

Human,Mouse

Background

The protein encoded by this gene belongs to the small GTPase superfamily, Rab family. The protein is membrane-bound and may be involved in protein transport and small GTPase mediated signal transduction. Mutations in this gene are associated with Griscelli syndrome type 2. Alternative splicing occurs at this locus and four transcript variants encoding the same protein have been identified.

Recommended Dilutions

WB	1:500 - 1:1000
IF/ICC	1:50 - 1:200

Immunogen Information

Gene ID

5873

Swiss Prot

P51159

Immunogen

Recombinant fusion protein containing a sequence corresponding to amino acids 1-221 of human RAB27A (NP_899057.1).

Synonyms

GS2; RAM; RAB27; HsT18676; [KD Validated] RAB27A

Contact



www.abclonal.com

Product Information

Source

Rabbit

Isotype

IgG

Purification

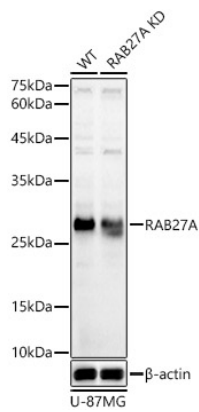
Affinity purification

Storage

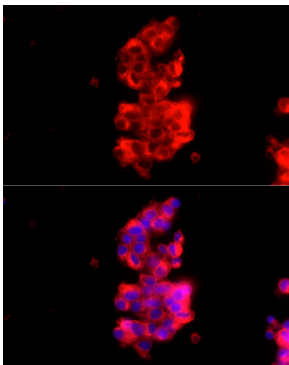
Store at -20°C. Avoid freeze / thaw cycles.

Buffer: PBS with 0.02% sodium azide,50% glycerol,pH7.3.

Validation Data



Western blot analysis of lysates from wild type (WT) and RAB27A knockdown (KD) U-87MG cells, using [KD Validated] RAB27A Rabbit pAb (A1934) at 1:1000 dilution.
Secondary antibody: HRP Goat Anti-Rabbit IgG (H+L) (AS014) at 1:10000 dilution.
Lysates/proteins: 25µg per lane.
Blocking buffer: 3% nonfat dry milk in TBST.
Detection: ECL Basic Kit (RM00020).
Exposure time: 10s.



Immunofluorescence analysis of HepG2 cells using [KD Validated] RAB27A Rabbit pAb (A1934) at dilution of 1:100 (40x lens).
Secondary antibody: Cy3 Goat Anti-Rabbit IgG (H+L) (AS007) at 1:500 dilution. Blue: DAPI for nuclear staining.