

# MAN2A2 Rabbit pAb

Catalog No.: A19323 **1 Publications**

## Basic Information

### Observed MW

128kDa

### Calculated MW

131kDa

### Category

Primary antibody

### Applications

ELISA, WB

### Cross-Reactivity

Human

## Background

Predicted to enable alpha-mannosidase activity. Predicted to be involved in N-glycan processing and protein deglycosylation. Predicted to be integral component of membrane. Predicted to be active in Golgi membrane.

## Recommended Dilutions

**WB** 1:500 - 1:1000

## Immunogen Information

### Gene ID

4122

### Swiss Prot

P49641

### Immunogen

A synthetic peptide corresponding to a sequence within amino acids 100-200 of human MAN2A2 (NP\_006113.2).

### Synonyms

MANA2X; MAN2A2

## Contact

 | [www.abclonal.com](http://www.abclonal.com)

## Product Information

### Source

Rabbit

### Isotype

IgG

### Purification

Affinity purification

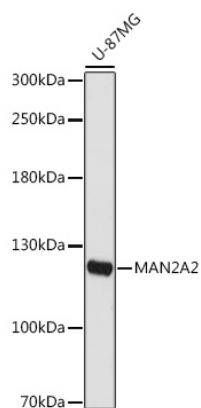
### Storage

Store at -20°C. Avoid freeze / thaw cycles.

Buffer: PBS with 0.01% thimerosal, 50% glycerol, pH7.3.

## Validation Data

---



Western blot analysis of lysates from U-87MG cells, using MAN2A2 Rabbit pAb (A19323) at 1:1000 dilution.

Secondary antibody: HRP Goat Anti-Rabbit IgG (H+L) (A5014) at 1:10000 dilution.

Lysates/proteins: 25µg per lane.

Blocking buffer: 3% nonfat dry milk in TBST.

Detection: ECL Basic Kit (RM00020).

Exposure time: 180s.