

A1926

Leader in Biomolecular Solutions for Life Science



TFAM Rabbit pAb

Catalog No.: A1926

6 Publications

Basic Information

Observed MW

22kDa

Calculated MW

29kDa

Category

Polyclonal Antibody

Applications

WB, IF/ICC, ELISA

Cross-Reactivity

Human

Background

This gene encodes a key mitochondrial transcription factor containing two high mobility group motifs. The encoded protein also functions in mitochondrial DNA replication and repair. Sequence polymorphisms in this gene are associated with Alzheimer's and Parkinson's diseases. There are pseudogenes for this gene on chromosomes 6, 7, and 11. Alternative splicing results in multiple transcript variants.

Recommended Dilutions

WB	1:500 - 1:2000
IF/ICC	1:50 - 1:200

Immunogen Information

Gene ID

7019

Swiss Prot

Q00059

Immunogen

Recombinant fusion protein containing a sequence corresponding to amino acids 1-220 of human TFAM (NP_003192.1).

Synonyms

TCF6; MTTF1; MTTFA; TCF6L1; TCF6L2; TCF6L3; MTDPS15; TFAM

Contact



www.abclonal.com

Product Information

Source

Rabbit

Isotype

IgG

Purification

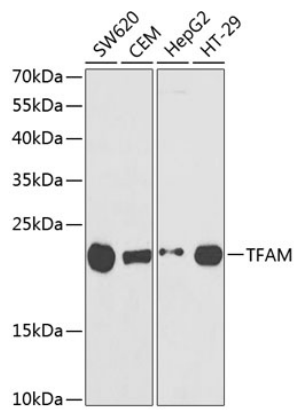
Affinity purification

Storage

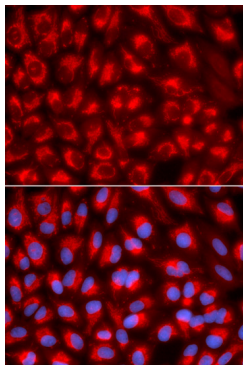
Store at -20°C. Avoid freeze / thaw cycles.

Buffer: PBS with 0.05% proclin300, 50% glycerol, pH7.3.

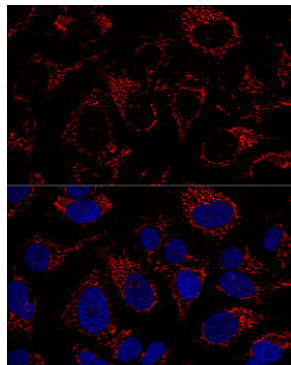
Validation Data



Western blot analysis of extracts of various cell lines, using TFAM antibody (A1926) at 1:1000 dilution.
Secondary antibody: HRP Goat Anti-Rabbit IgG (H+L) (A5014) at 1:10000 dilution.
Lysates/proteins: 25µg per lane.
Blocking buffer: 3% nonfat dry milk in TBST.



Immunofluorescence analysis of U2OS cells using TFAM antibody (A1926). Blue: DAPI for nuclear staining.



Confocal immunofluorescence analysis of U2OS cells using TFAM Polyclonal Antibody (A1926) at dilution of 1:100. Blue: DAPI for nuclear staining.