

A19090

Leader in Biomolecular Solutions for Life Science



## Notch1 Rabbit mAb

Catalog No.: A19090

Recombinant

7 Publications

### Basic Information

#### Observed MW

125kDa

#### Calculated MW

273kDa

#### Category

SMab Recombinant Monoclonal Antibody

#### Applications

WB,IP,ELISA

#### Cross-Reactivity

Human,Mouse

#### CloneNo number

ARC0285

### Background

This gene encodes a member of the NOTCH family of proteins. Members of this Type I transmembrane protein family share structural characteristics including an extracellular domain consisting of multiple epidermal growth factor-like (EGF) repeats, and an intracellular domain consisting of multiple different domain types. Notch signaling is an evolutionarily conserved intercellular signaling pathway that regulates interactions between physically adjacent cells through binding of Notch family receptors to their cognate ligands. The encoded preproprotein is proteolytically processed in the trans-Golgi network to generate two polypeptide chains that heterodimerize to form the mature cell-surface receptor. This receptor plays a role in the development of numerous cell and tissue types. Mutations in this gene are associated with aortic valve disease, Adams-Oliver syndrome, T-cell acute lymphoblastic leukemia, chronic lymphocytic leukemia, and head and neck squamous cell carcinoma.

### Recommended Dilutions

WB 1:500 - 1:2000

IP 0.5µg-4µg antibody for  
200µg-400µg extracts of  
whole cells

### Immunogen Information

#### Gene ID

4851

#### Swiss Prot

P46531

#### Immunogen

A synthetic peptide corresponding to a sequence within amino acids 2456-2555 of human Notch1 (P46531).

#### Synonyms

hN1; AOS5; TAN1; AOVD1; Notch1

### Contact



[www.abclonal.com](http://www.abclonal.com)

### Product Information

#### Source

Rabbit

#### Isotype

IgG

#### Purification

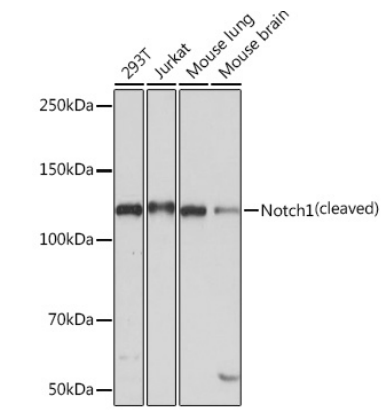
Affinity purification

#### Storage

Store at -20°C. Avoid freeze / thaw cycles.

Buffer: PBS with 0.02% sodium azide,0.05% BSA,50% glycerol,pH7.3.

Validation Data



Western blot analysis of various lysates using Notch1 Rabbit mAb (A19090) at 1:1000 dilution. Secondary antibody: HRP Goat Anti-Rabbit IgG (H+L) (AS014) at 1:10000 dilution. Lysates/proteins: 25µg per lane. Blocking buffer: 3% nonfat dry milk in TBST. Detection: ECL Basic Kit (RM00020). Exposure time: 3min.

Immunoprecipitation analysis of 200 µg extracts of 293T cells using 3 µg Notch1 antibody (A19090). Western blot was performed from the immunoprecipitate using Notch1 antibody (A19090) at a dilution of 1:1000.

