

# METTL3 Rabbit mAb

Catalog No.: A19079

Recombinant

7 Publications

## Basic Information

### Observed MW

80kDa/70kDa

### Calculated MW

64kDa

### Category

Primary antibody

### Applications

ELISA, WB, IF/ICC, IP

### Cross-Reactivity

Human

### CloneNo number

ARC0487

## Background

This gene encodes the 70 kDa subunit of MT-A which is part of N6-adenosine-methyltransferase. This enzyme is involved in the posttranscriptional methylation of internal adenosine residues in eukaryotic mRNAs, forming N6-methyladenosine.

## Recommended Dilutions

**WB** 1:500 - 1:2000

**IF/ICC** 1:50 - 1:200

**IP** 0.5µg-4µg antibody for  
200µg-400µg extracts of  
whole cells

## Immunogen Information

### Gene ID

56339

### Swiss Prot

Q86U44

### Immunogen

Recombinant fusion protein containing a sequence corresponding to amino acids 2-250 of human METTL3 (Q86U44).

### Synonyms

M6A; IME4; Spo8; MT-A70; hMETTL3; METTL3

## Contact

 | [www.abclonal.com](http://www.abclonal.com)

## Product Information

### Source

Rabbit

### Isotype

IgG

### Purification

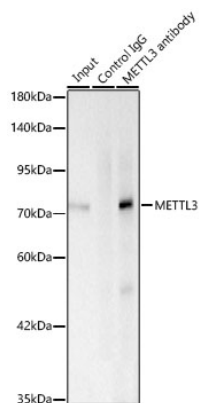
Affinity purification

### Storage

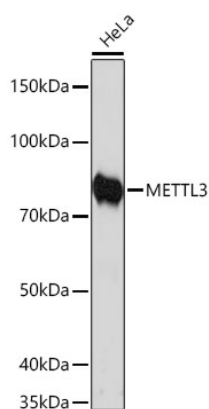
Store at -20°C. Avoid freeze / thaw cycles.

Buffer: PBS with 0.02% sodium azide, 0.05% BSA, 50% glycerol, pH7.3.

## Validation Data



Immunoprecipitation of METTL3 from 200 µg extracts of 293F cells was performed using 0.5 µg of METTL3 Rabbit mAb (A19079). Rabbit IgG isotype control(AC042) was used to precipitate the Control IgG sample. IP samples were eluted with 1X Laemmli Buffer. The Input lane represents 10% of the total input. Western blot analysis of immunoprecipitates was conducted using METTL3 Rabbit mAb (A19079) at a dilution of 1:500.



Western blot analysis of lysates from HeLa cells, using METTL3 Rabbit mAb (A19079) at 1:1000 dilution.

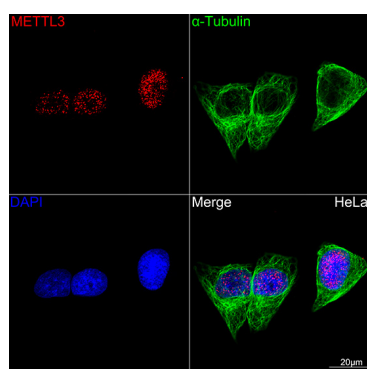
Secondary antibody: HRP Goat Anti-Rabbit IgG (H+L) (AS014) at 1:10000 dilution.

Lysates/proteins: 25µg per lane.

Blocking buffer: 3% nonfat dry milk in TBST.

Detection: ECL Enhanced Kit (RM00021).

Exposure time: 3min.



Confocal imaging of HeLa cells using METTL3 Rabbit mAb (A19079,dilution 1:100)(Red). The cells were counterstained with α-Tubulin Mouse mAb (AC012,dilution 1:400) (Green). DAPI was used for nuclear staining (blue). Objective: 100x.