

Integrin alpha 5 (ITGA5/CD49e) Rabbit mAb

Catalog No.: A19069

Recombinant

3 Publications

Basic Information

Observed MW

17kDa/150kDa

Calculated MW

115kDa

Category

Primary antibody

Applications

ELISA, WB, IHC-P, IF/ICC, FC (intra)

Cross-Reactivity

Human, Mouse, Rat

CloneNo number

ARC0370

Background

The product of this gene belongs to the integrin alpha chain family. Integrins are heterodimeric integral membrane proteins composed of an alpha subunit and a beta subunit that function in cell surface adhesion and signaling. The encoded preproprotein is proteolytically processed to generate light and heavy chains that comprise the alpha 5 subunit. This subunit associates with the beta 1 subunit to form a fibronectin receptor. This integrin may promote tumor invasion, and higher expression of this gene may be correlated with shorter survival time in lung cancer patients. Note that the integrin alpha 5 and integrin alpha V subunits are encoded by distinct genes.

Recommended Dilutions

WB	1:500 - 1:2000
IHC-P	1:50 - 1:200
IF/ICC	1:50 - 1:200
FC (intra)	1:50 - 1:200

Immunogen Information

Gene ID

3678

Swiss Prot

P08648

Immunogen

A synthetic peptide corresponding to a sequence within amino acids 950-1049 of human Integrin alpha 5 (ITGA5/CD49e) (P08648).

Synonyms

FNRA; CD49e; VLA-5; VLA5A; Integrin alpha 5 (ITGA5/CD49e)

Contact

 | www.abclonal.com

Product Information

Source

Rabbit

Isotype

IgG

Purification

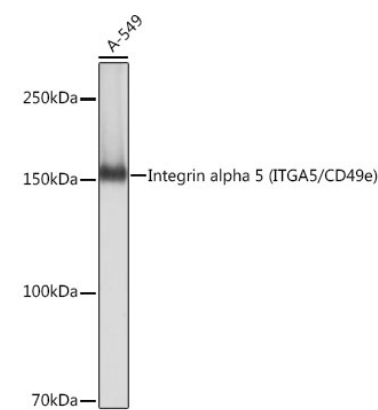
Affinity purification

Storage

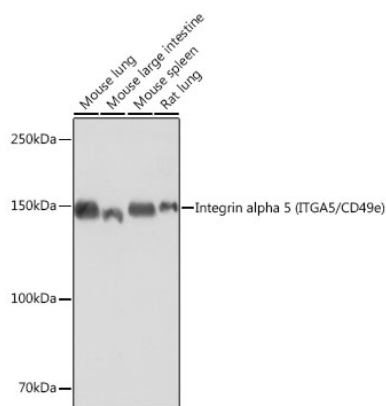
Store at -20°C. Avoid freeze / thaw cycles.

Buffer: PBS with 0.02% sodium azide, 0.05% BSA, 50% glycerol, pH7.3.

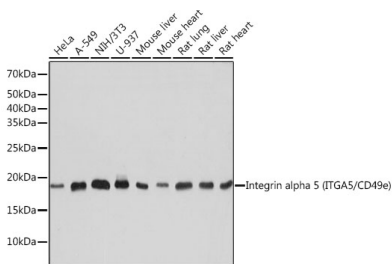
Validation Data



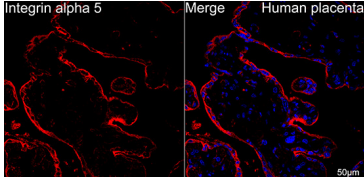
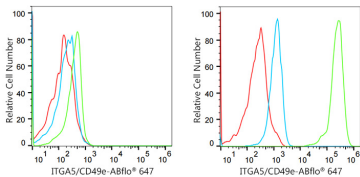
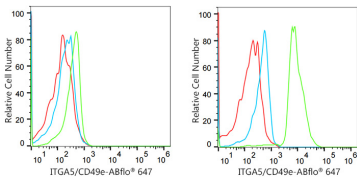
Western blot analysis of lysates from A-549 cells, using Integrin alpha 5 (ITGA5/CD49e) Rabbit mAb (A19069) at 1:1000 dilution.
Secondary antibody: HRP Goat Anti-Rabbit IgG (H+L) (AS014) at 1:10000 dilution.
Lysates/proteins: 25µg per lane.
Blocking buffer: 3% nonfat dry milk in TBST.
Detection: ECL Basic Kit (RM00020).
Exposure time: 1s.



Western blot analysis of various lysates using Integrin alpha 5 (ITGA5/CD49e) Rabbit mAb (A19069) at 1:1000 dilution.
Secondary antibody: HRP Goat Anti-Rabbit IgG (H+L) (AS014) at 1:10000 dilution.
Lysates/proteins: 25µg per lane.
Blocking buffer: 3% nonfat dry milk in TBST.
Detection: ECL Basic Kit (RM00020).
Exposure time: 10s.

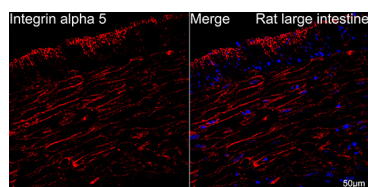


Western blot analysis of various lysates using Integrin alpha 5 (ITGA5/CD49e) Rabbit mAb (A19069) at 1:1000 dilution.
Secondary antibody: HRP Goat Anti-Rabbit IgG (H+L) (AS014) at 1:10000 dilution.
Lysates/proteins: 25µg per lane.
Blocking buffer: 3% nonfat dry milk in TBST.
Detection: ECL Basic Kit (RM00020).
Exposure time: 1s.

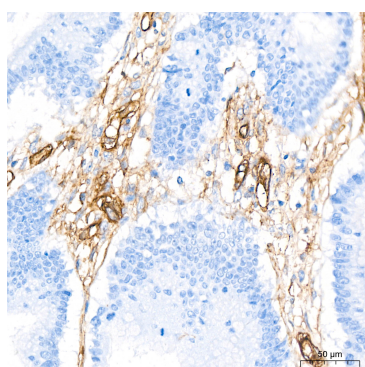


Validation Data

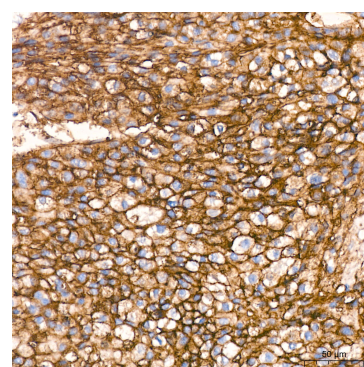
Flow cytometry: 1×10^6 Daudi cells (negative control, left) and K-562 cells (right) were intracellularly-stained with Integrin alpha 5 (ITGA5/CD49e) Rabbit mAb (A19069, 5 $\mu\text{g/mL}$, green line) or Rabbit IgG isotype control (AC042, 5 $\mu\text{g/mL}$, blue line), followed by Alexa Fluor 647 conjugated goat anti-rabbit pAb (1:600 dilution) staining. Non-fluorescently stained cells were used as blank control (red line).



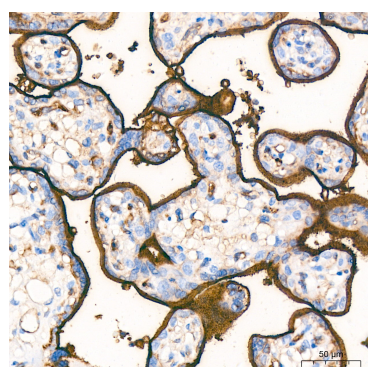
Flow cytometry: 1×10^6 Daudi cells (negative control, left) and U-87MG cells (right) were intracellularly-stained with Integrin alpha 5 (ITGA5/CD49e) Rabbit mAb (A19069, 5 $\mu\text{g/mL}$, green line) or Rabbit IgG isotype control (AC042, 5 $\mu\text{g/mL}$, blue line), followed by Alexa Fluor 647 conjugated goat anti-rabbit pAb (1:600 dilution) staining. Non-fluorescently stained cells were used as blank control (red line).



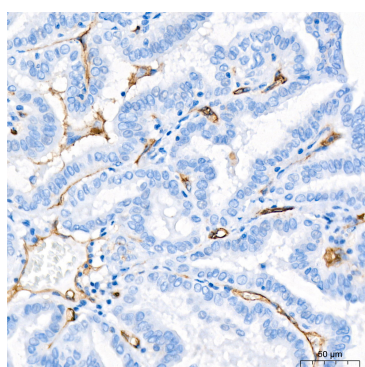
Confocal imaging of paraffin-embedded Human placenta using Integrin alpha 5 (ITGA5/CD49e) Rabbit mAb (A19069, dilution 1:50) followed by a further incubation with Cy3 Goat Anti-Rabbit IgG (H+L) (AS007, dilution 1:500) (Red). DAPI was used for nuclear staining (Blue). Objective: 40x. Perform high pressure antigen retrieval with 0.01 M citrate buffer (pH 6.0) prior to IF staining.



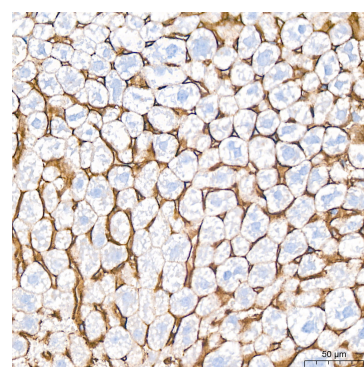
Confocal imaging of paraffin-embedded Rat large intestine using Integrin alpha 5 (ITGA5/CD49e) Rabbit mAb (A19069, dilution 1:50) followed by a further incubation with Cy3 Goat Anti-Rabbit IgG (H+L) (AS007, dilution 1:500) (Red). DAPI was used for nuclear staining (Blue). Objective: 40x. Perform high pressure antigen retrieval with 0.01 M citrate buffer (pH 6.0) prior to IF staining.



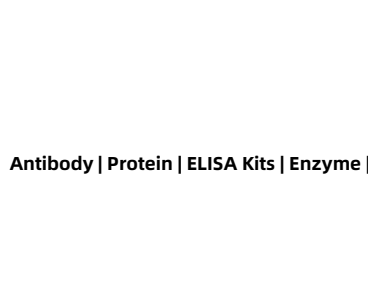
Immunohistochemistry analysis of Integrin alpha 5 (ITGA5/CD49e) in paraffin-embedded human colon carcinoma tissue using Integrin alpha 5 (ITGA5/CD49e) Rabbit mAb (A19069) at a dilution of 1:200 (40x lens). High pressure antigen retrieval was performed with 0.01 M citrate buffer (pH 6.0) prior to IHC staining.



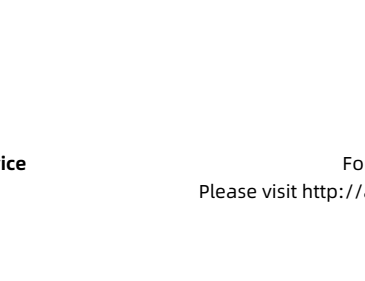
Immunohistochemistry analysis of Integrin alpha 5 (ITGA5/CD49e) in paraffin-embedded human liver cancer tissue using Integrin alpha 5 (ITGA5/CD49e) Rabbit mAb (A19069) at a dilution of 1:200 (40x lens). High pressure antigen retrieval was performed with 0.01 M citrate buffer (pH 6.0) prior to IHC staining.



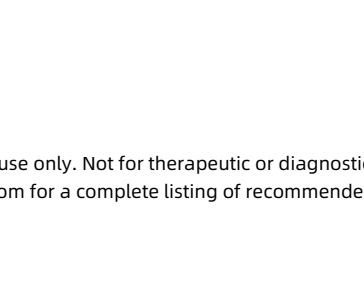
Immunohistochemistry analysis of Integrin alpha 5 (ITGA5/CD49e) in paraffin-embedded human placenta tissue using Integrin alpha 5 (ITGA5/CD49e) Rabbit mAb (A19069) at a dilution of 1:200 (40x lens). High pressure antigen retrieval was performed with 0.01 M citrate buffer (pH 6.0) prior to IHC staining.



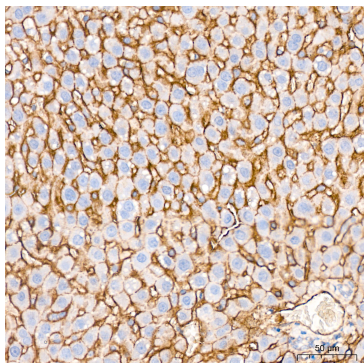
Immunohistochemistry analysis of Integrin alpha 5 (ITGA5/CD49e) in paraffin-embedded human thyroid cancer tissue using Integrin alpha 5 (ITGA5/CD49e) Rabbit mAb (A19069) at a dilution of 1:200 (40x lens). High pressure antigen retrieval was performed with 0.01 M citrate buffer (pH 6.0) prior to IHC staining.



Immunohistochemistry analysis of Integrin alpha 5 (ITGA5/CD49e) in paraffin-embedded mouse liver tissue using Integrin alpha 5 (ITGA5/CD49e) Rabbit mAb (A19069) at a dilution of 1:200 (40x lens). High pressure antigen retrieval was performed with 0.01 M citrate buffer (pH 6.0) prior to IHC staining.



Validation Data



Immunohistochemistry analysis of Integrin alpha 5 (ITGA5/CD49e) in paraffin-embedded rat liver tissue using Integrin alpha 5 (ITGA5/CD49e) Rabbit mAb (A19069) at a dilution of 1:200 (40x lens). High pressure antigen retrieval was performed with 0.01 M citrate buffer (pH 6.0) prior to IHC staining.