

[KD Validated] Heme Oxygenase 1 (HO-1/HMOX1) Rabbit mAb

Catalog No.: A19062 **Recombinant** **36 Publications**

Basic Information

Observed MW

33kDa

Calculated MW

33kDa

Category

Primary antibody

Applications

ELISA, WB, IHC-P, IF/ICC

Cross-Reactivity

Human, Mouse, Rat

CloneNo number

ARC53508

Background

Heme oxygenase, an essential enzyme in heme catabolism, cleaves heme to form biliverdin, which is subsequently converted to bilirubin by biliverdin reductase, and carbon monoxide, a putative neurotransmitter. Heme oxygenase activity is induced by its substrate heme and by various nonheme substances. Heme oxygenase occurs as 2 isozymes, an inducible heme oxygenase-1 and a constitutive heme oxygenase-2. HMOX1 and HMOX2 belong to the heme oxygenase family.

Recommended Dilutions

WB	1:2000 - 1:10000
IHC-P	1:50 - 1:200
IF/ICC	1:50 - 1:200

Immunogen Information

Gene ID	Swiss Prot
3162	P09601

Immunogen

Recombinant fusion protein containing a sequence corresponding to amino acids 1-265 of human Heme Oxygenase 1 (HO-1/HMOX1) (NP_002124.1).

Synonyms

HO-1; HSP32; HMOX1D; bK286B10

Contact

 | www.abclonal.com

Product Information

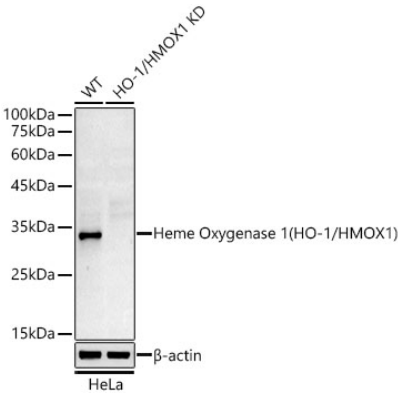
Source	Isotype	Purification
Rabbit	IgG	Affinity purification

Storage

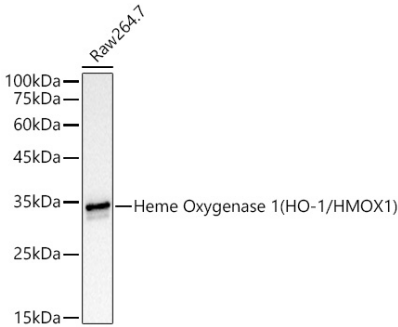
Store at -20°C. Avoid freeze / thaw cycles.

Buffer: PBS with 0.05% proclin300, 0.05% BSA, 50% glycerol, pH7.3.

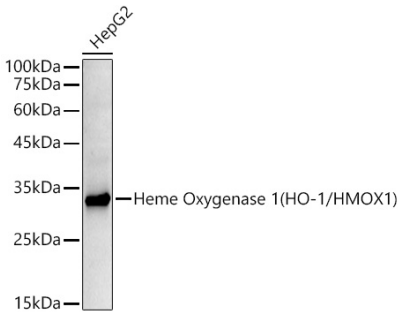
Validation Data



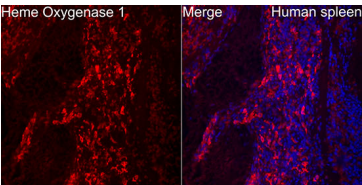
Western blot analysis of lysates from wild type(WT) and Heme Oxygenase 1 (HO-1/HMOX1) knockdown (KD) HeLa cells, using [KD Validated] Heme Oxygenase 1 (HO-1/HMOX1) Rabbit mAb (A19062) at 1:10000 dilution.
Secondary antibody: HRP Goat Anti-Rabbit IgG (H+L) (AS014) at 1:10000 dilution.
Lysates/proteins: 25µg per lane.
Blocking buffer: 3% nonfat dry milk in TBST.
Detection: ECL Basic Kit (RM00020).
Exposure time: 180s.



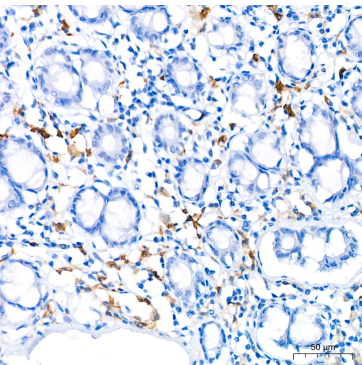
Western blot analysis of lysates from Raw264.7 cells, using [KD Validated] Heme Oxygenase 1 (HO-1/HMOX1) Rabbit mAb (A19062) at 1:10000 dilution.
Secondary antibody: HRP Goat Anti-Rabbit IgG (H+L) (AS014) at 1:10000 dilution.
Lysates/proteins: 25µg per lane.
Blocking buffer: 3% nonfat dry milk in TBST.
Detection: ECL Basic Kit (RM00020).
Exposure time: 3s.



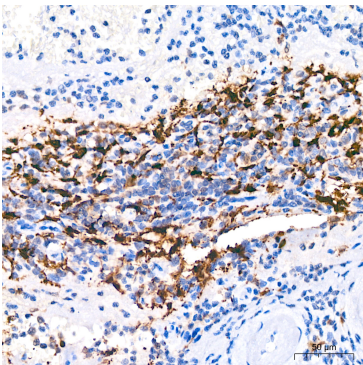
Western blot analysis of lysates from HepG2 cells, using [KD Validated] Heme Oxygenase 1 (HO-1/HMOX1) Rabbit mAb (A19062) at 1:10000 dilution.
Secondary antibody: HRP Goat Anti-Rabbit IgG (H+L) (AS014) at 1:10000 dilution.
Lysates/proteins: 25µg per lane.
Blocking buffer: 3% nonfat dry milk in TBST.
Detection: ECL Basic Kit (RM00020).
Exposure time: 180s.



Immunofluorescence analysis of paraffin-



Immunohistochemistry analysis of Heme



Immunohistochemistry analysis of Heme

Validation Data

embedded human spleen using [KD Validated] Heme Oxygenase 1 (HO-1/HMOX1) Rabbit mAb (A19062) at dilution of 1:50 (40x lens). Secondary antibody: Cy3 Goat Anti-Rabbit IgG (H+L) (AS007) at 1:500 dilution. Blue: DAPI for nuclear staining.	Oxygenase 1 (HO-1/HMOX1) in paraffin-embedded human colon using [KD Validated] Heme Oxygenase 1 (HO-1/HMOX1) Rabbit mAb (A19062) at dilution of 1:200 (40x lens).Perform high pressure antigen retrieval with 10 mM citrate buffer pH 6.0 before commencing with IHC staining protocol.	Oxygenase 1 (HO-1/HMOX1) in paraffin-embedded human spleen using [KD Validated] Heme Oxygenase 1 (HO-1/HMOX1) Rabbit mAb (A19062) at dilution of 1:200 (40x lens).Perform high pressure antigen retrieval with 10 mM citrate buffer pH 6.0 before commencing with IHC staining protocol.
---	---	--