

A19057

Leader in Biomolecular Solutions for Life Science



## Glucosylceramidase beta (GBA) Rabbit mAb

Catalog No.: A19057 **Recombinant**

### Basic Information

**Observed MW**

60kDa

**Calculated MW**

60kDa

**Category**

SMab Recombinant Monoclonal Antibody

**Applications**

WB, IHC-P, ELISA

**Cross-Reactivity**

Human, Rat

**CloneNo number**

ARC0500

### Background

This gene encodes a lysosomal membrane protein that cleaves the beta-glucosidic linkage of glycosylceramide, an intermediate in glycolipid metabolism. Mutations in this gene cause Gaucher disease, a lysosomal storage disease characterized by an accumulation of glucocerebrosides. A related pseudogene is approximately 12 kb downstream of this gene on chromosome 1. Alternative splicing results in multiple transcript variants.

### Recommended Dilutions

**WB** 1:500 - 1:2000

**IHC-P** 1:50 - 1:200

### Immunogen Information

**Gene ID**

2629

**Swiss Prot**

P04062

**Immunogen**

A synthetic peptide corresponding to a sequence within amino acids 437-536 of human Glucosylceramidase beta (GBA) (P04062).

**Synonyms**

GBA; GCB; GLUC; Glucosylceramidase beta (GBA)

### Contact



[www.abclonal.com](http://www.abclonal.com)

### Product Information

**Source**

Rabbit

**Isotype**

IgG

**Purification**

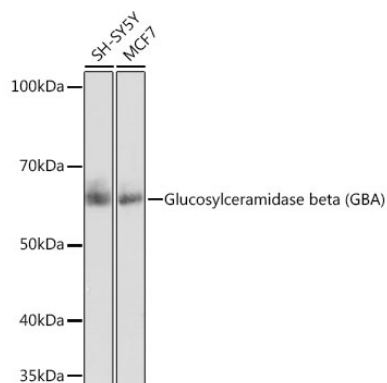
Affinity purification

**Storage**

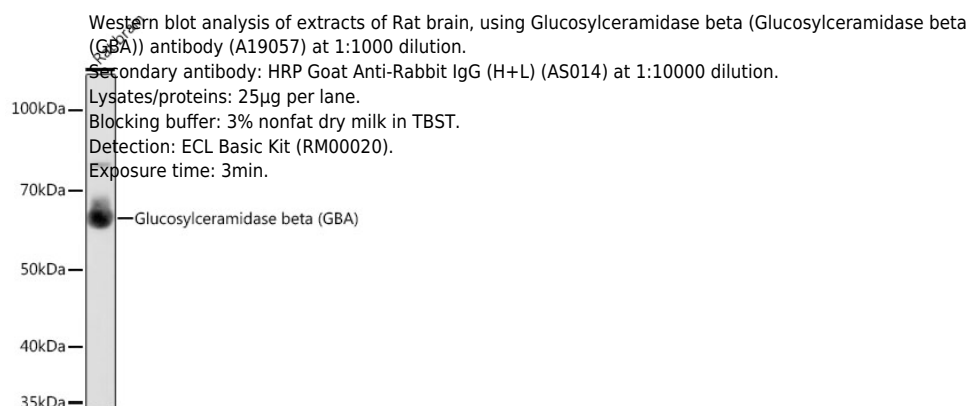
Store at -20°C. Avoid freeze / thaw cycles.

Buffer: PBS with 0.02% sodium azide, 0.05% BSA, 50% glycerol, pH7.3.

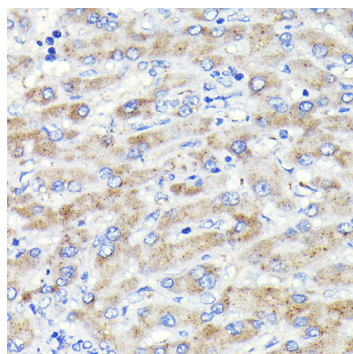
## Validation Data



Western blot analysis of extracts of various cell lines, using Glucosylceramidase beta (Glucosylceramidase beta (GBA)) antibody (A19057) at 1:1000 dilution.  
 Secondary antibody: HRP Goat Anti-Rabbit IgG (H+L) (AS014) at 1:10000 dilution.  
 Lysates/proteins: 25µg per lane.  
 Blocking buffer: 3% nonfat dry milk in TBST.  
 Detection: ECL Basic Kit (RM00020).  
 Exposure time: 10s.



Western blot analysis of extracts of Rat brain, using Glucosylceramidase beta (Glucosylceramidase beta (GBA)) antibody (A19057) at 1:1000 dilution.  
 Secondary antibody: HRP Goat Anti-Rabbit IgG (H+L) (AS014) at 1:10000 dilution.  
 Lysates/proteins: 25µg per lane.  
 Blocking buffer: 3% nonfat dry milk in TBST.  
 Detection: ECL Basic Kit (RM00020).  
 Exposure time: 3min.



Immunohistochemistry analysis of paraffin-embedded human liver using Glucosylceramidase beta (Glucosylceramidase beta (GBA)) Rabbit mAb (A19057) at dilution of 1:100 (40x lens). Perform microwave antigen retrieval with 10 mM PBS buffer pH 7.2 before commencing with IHC staining protocol.