

# Cytokeratin 19 (CK19) Rabbit mAb

Catalog No.: A19040

Recombinant

5 Publications

## Basic Information

### Observed MW

43kDa

### Calculated MW

44kDa

### Category

Primary antibody

### Applications

ELISA, WB, IHC-P, IF/ICC

### Cross-Reactivity

Human

### CloneNo number

ARC2811

## Background

The protein encoded by this gene is a member of the keratin family. The keratins are intermediate filament proteins responsible for the structural integrity of epithelial cells and are subdivided into cytokeratins and hair keratins. The type I cytokeratins consist of acidic proteins which are arranged in pairs of heterotypic keratin chains. Unlike its related family members, this smallest known acidic cytokeratin is not paired with a basic cytokeratin in epithelial cells. It is specifically expressed in the periderm, the transiently superficial layer that envelopes the developing epidermis. The type I cytokeratins are clustered in a region of chromosome 17q12-q21.

## Recommended Dilutions

WB	1:100 - 1:500
IHC-P	1:50 - 1:200
IF/ICC	1:50 - 1:200

## Immunogen Information

### Gene ID

3880

### Swiss Prot

P08727

### Immunogen

A synthetic peptide corresponding to a sequence within amino acids 1-100 of human Cytokeratin 19 (KRT19) (KRT19) (P08727).

### Synonyms

K19; KRT19; K1CS; Cytokeratin 19 (CK19)

## Contact

 | [www.abclonal.com](http://www.abclonal.com)

## Product Information

### Source

Rabbit

### Isotype

IgG

### Purification

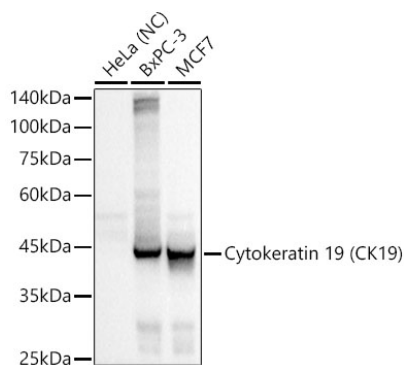
Affinity purification

### Storage

Store at -20°C. Avoid freeze / thaw cycles.

Buffer: PBS with 0.02% sodium azide, 0.05% BSA, 50% glycerol, pH7.3.

## Validation Data



Western blot analysis of various lysates, using Cytokeratin 19 (CK19) Rabbit mAb (A19040) at 1:500 dilution.

Secondary antibody: HRP Goat Anti-Rabbit IgG (H+L) (A5014) at 1:10000 dilution.

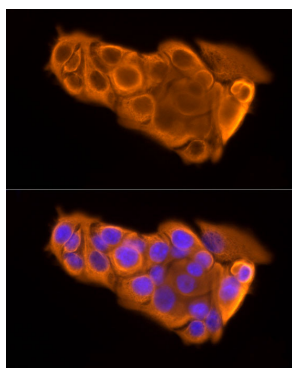
Lysates/proteins: 25µg per lane.

Blocking buffer: 3% nonfat dry milk in TBST.

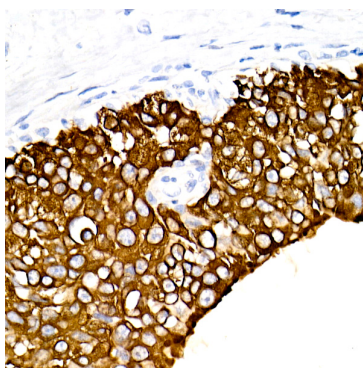
Detection: ECL Basic Kit (RM00020).

Negative control (NC): HeLa

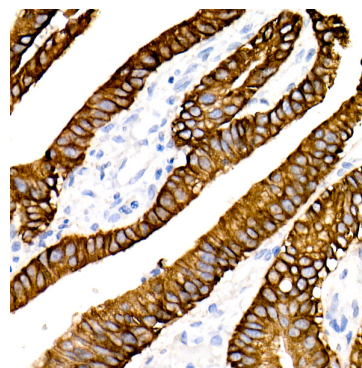
Exposure time: 0.5s.



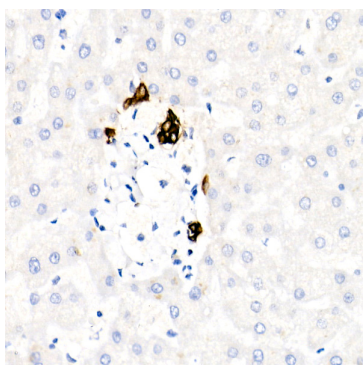
Immunofluorescence analysis of MCF7 cells using Cytokeratin 19 (KRT19) Rabbit mAb (A19040) at dilution of 1:20 (40x lens). Secondary antibody: Cy3 Goat Anti-Rabbit IgG (H+L) (A5007) at 1:500 dilution. Blue: DAPI for nuclear staining.



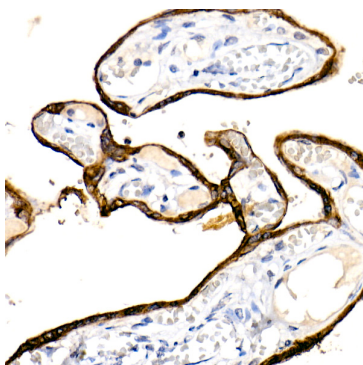
Immunohistochemistry analysis of Cytokeratin 19 (CK19) in paraffin-embedded human breast cancer using Cytokeratin 19 (CK19) Rabbit mAb (A19040) at dilution of 1:20 (40x lens). Perform high pressure antigen retrieval with 10 mM citrate buffer pH 6.0 before commencing with IHC staining protocol.



Immunohistochemistry analysis of Cytokeratin 19 (CK19) in paraffin-embedded human colon carcinoma using Cytokeratin 19 (CK19) Rabbit mAb (A19040) at dilution of 1:20 (40x lens). Perform high pressure antigen retrieval with 10 mM citrate buffer pH 6.0 before commencing with IHC staining protocol.



Immunohistochemistry analysis of Cytokeratin 19 (CK19) in paraffin-embedded human liver using Cytokeratin 19 (CK19) Rabbit mAb (A19040) at dilution of 1:20 (40x lens). Perform high pressure antigen retrieval with 10 mM citrate buffer pH 6.0 before commencing with IHC staining protocol.



Immunohistochemistry analysis of Cytokeratin 19 (CK19) in paraffin-embedded human placenta using Cytokeratin 19 (CK19) Rabbit mAb (A19040) at dilution of 1:20 (40x lens). Perform high pressure antigen retrieval with 10 mM citrate buffer pH 6.0 before commencing with IHC staining protocol.