

IL11 Rabbit pAb

Catalog No.: A1902 **8 Publications**

Basic Information

Observed MW

25kDa

Calculated MW

21kDa

Category

Primary antibody

Applications

ELISA, WB, IF/ICC

Cross-Reactivity

Human, Mouse, Rat

Background

The protein encoded by this gene is a member of the gp130 family of cytokines. These cytokines drive the assembly of multisubunit receptor complexes, all of which contain at least one molecule of the transmembrane signaling receptor IL6ST (gp130). This cytokine is shown to stimulate the T-cell-dependent development of immunoglobulin-producing B cells. It is also found to support the proliferation of hematopoietic stem cells and megakaryocyte progenitor cells. Alternatively spliced transcript variants encoding distinct isoforms have been found for this gene.

Recommended Dilutions

WB 1:1000 - 1:5000**IF/ICC** 1:50 - 1:200

Immunogen Information

Gene ID

3589

Swiss Prot

P20809

Immunogen

Recombinant fusion protein containing a sequence corresponding to amino acids 22-199 of human IL11 (NP_000632.1).

Synonyms

AGIF; IL-11; IL11

Contact

 | www.abclonal.com

Product Information

Source

Rabbit

Isotype

IgG

Purification

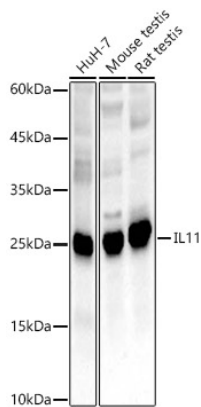
Affinity purification

Storage

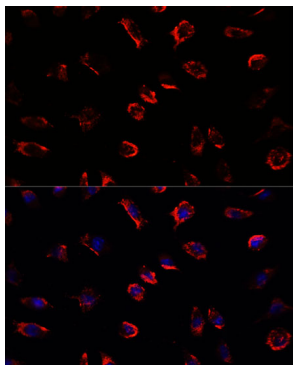
Store at -20°C. Avoid freeze / thaw cycles.

Buffer: PBS with 0.05% proclin300, 50% glycerol, pH7.3.

Validation Data



Western blot analysis of various lysates, using IL11 Rabbit pAb (A1902) at 1:2000 dilution.
Secondary antibody: HRP Goat Anti-Rabbit IgG (H+L) (AS014) at 1:10000 dilution.
Lysates/proteins: 25µg per lane.
Blocking buffer: 3% nonfat dry milk in TBST.
Detection: ECL Basic Kit (RM00020).
Exposure time: 60s.



Immunofluorescence analysis of L929 cells using IL11 antibody (A1902) at dilution of 1:100. Blue: DAPI for nuclear staining.