

CD10/MME Rabbit mAb

Catalog No.: A19007

Recombinant

1 Publications

Basic Information

Observed MW

90kDa

Calculated MW

86kDa

Category

Primary antibody

Applications

ELISA, WB

Cross-Reactivity

Human, Mouse, Rat

CloneNo number

ARC2637

Background

The protein encoded by this gene is a type II transmembrane glycoprotein and a common acute lymphocytic leukemia antigen that is an important cell surface marker in the diagnosis of human acute lymphocytic leukemia (ALL). The encoded protein is present on leukemic cells of pre-B phenotype, which represent 85% of cases of ALL. This protein is not restricted to leukemic cells, however, and is found on a variety of normal tissues. The protein is a neutral endopeptidase that cleaves peptides at the amino side of hydrophobic residues and inactivates several peptide hormones including glucagon, enkephalins, substance P, neurotensin, oxytocin, and bradykinin.

Recommended Dilutions

WB 1:500 - 1:2000

Immunogen Information

Gene ID

4311

Swiss Prot

P08473

Immunogen

Recombinant fusion protein containing a sequence corresponding to amino acids 52-750 of human CD10/MME (NP_000893.2).

Synonyms

NEP; SFE; CD10; CALLA; CMT2T; SCA43; CD10/MME

Contact

 | www.abclonal.com

Product Information

Source

Rabbit

Isotype

IgG

Purification

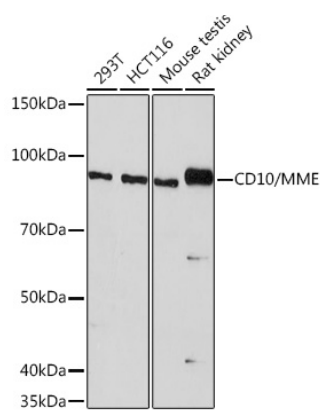
Affinity purification

Storage

Store at -20°C. Avoid freeze / thaw cycles.

Buffer: PBS with 0.05% proclin300, 0.05% BSA, 50% glycerol, pH7.3.

Validation Data



Western blot analysis of extracts of various cell lines, using CD10/MME antibody (A19007) at 1:1000 dilution.
Secondary antibody: HRP Goat Anti-Rabbit IgG (H+L) (A5014) at 1:10000 dilution.
Lysates/proteins: 25µg per lane.
Blocking buffer: 3% nonfat dry milk in TBST.
Detection: ECL Basic Kit (RM00020).
Exposure time: 90s.