

A1897

Leader in Biomolecular Solutions for Life Science



SLPI Rabbit pAb

Catalog No.: A1897

Basic Information

Observed MW

12kDa

Calculated MW

14kDa

Category

Polyclonal Antibody

Applications

WB, ELISA

Cross-Reactivity

Human, Mouse, Rat

Background

This gene encodes a secreted inhibitor which protects epithelial tissues from serine proteases. It is found in various secretions including seminal plasma, cervical mucus, and bronchial secretions, and has affinity for trypsin, leukocyte elastase, and cathepsin G. Its inhibitory effect contributes to the immune response by protecting epithelial surfaces from attack by endogenous proteolytic enzymes. This antimicrobial protein has antibacterial, antifungal and antiviral activity.

Recommended Dilutions

WB 1:500 - 1:1000

Immunogen Information

Gene ID

6590

Swiss Prot

P03973

Immunogen

Recombinant fusion protein containing a sequence corresponding to amino acids 26-132 of human SLPI (NP_003055.1).

Synonyms

ALP; MPI; ALK1; BLPI; HUSI; WAP4; WFDC4; HUSI-I; SLPI

Contact



www.abclonal.com

Product Information

Source

Rabbit

Isotype

IgG

Purification

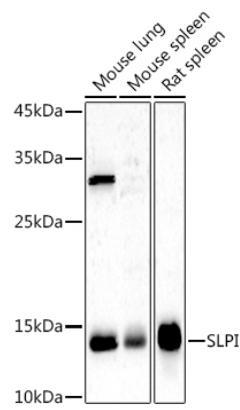
Affinity purification

Storage

Store at -20°C. Avoid freeze / thaw cycles.

Buffer: PBS with 0.05% proclin300, 50% glycerol, pH7.3.

Validation Data



Western blot analysis of various lysates using SLPI Rabbit pAb (A1897) at 1:1000 dilution.
Secondary antibody: HRP Goat Anti-Rabbit IgG (H+L) (AS014) at 1:10000 dilution.
Lysates/proteins: 25µg per lane.
Blocking buffer: 3% nonfat dry milk in TBST.
Detection: ECL Basic Kit (RM00020).
Exposure time: 180s.