

A18852

Leader in Biomolecular Solutions for Life Science



## KMT2B Rabbit pAb

Catalog No.: A18852

1 Publications

### Basic Information

#### Observed MW

320kDa

#### Calculated MW

294kDa

#### Category

Polyclonal Antibody

#### Applications

WB, ELISA

#### Cross-Reactivity

Human, Mouse, Rat

### Background

This gene encodes a protein which contains multiple domains including a CXXC zinc finger, three PHD zinc fingers, two FY-rich domains, and a SET (suppressor of variegation, enhancer of zeste, and trithorax) domain. The SET domain is a conserved C-terminal domain that characterizes proteins of the MLL (mixed-lineage leukemia) family. This gene is ubiquitously expressed in adult tissues. It is also amplified in solid tumor cell lines, and may be involved in human cancer. Two alternatively spliced transcript variants encoding distinct isoforms have been reported for this gene, however, the full length nature of the shorter transcript is not known.

### Recommended Dilutions

WB 1:500 - 1:1000

### Immunogen Information

#### Gene ID

9757

#### Swiss Prot

Q9UMN6

#### Immunogen

Recombinant fusion protein containing a sequence corresponding to amino acids 1370-1570 of human KMT2B (NP\_055542.1).

#### Synonyms

HRX2; MLL2; MLL4; TRX2; WBP7; DYT28; MLL1B; MRD68; WBP-7; CXXC10; KMT2B

### Contact



[www.abclonal.com](http://www.abclonal.com)

### Product Information

#### Source

Rabbit

#### Isotype

IgG

#### Purification

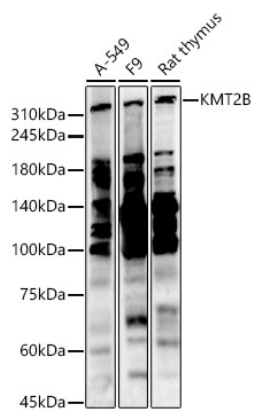
Affinity purification

#### Storage

Store at -20°C. Avoid freeze / thaw cycles.

Buffer: PBS with 0.01% thimerosal, 50% glycerol, pH7.3.

Validation Data



Western blot analysis of various lysates, using KMT2B antibody (A18852) at 1:800 dilution. Secondary antibody: HRP Goat Anti-Rabbit IgG (H+L) (AS014) at 1:10000 dilution. Lysates/proteins: 25µg per lane. Blocking buffer: 3% nonfat dry milk in TBST. Detection: ECL Enhanced Kit (RM00021). Exposure time: 60s.