

A18674

Leader in Biomolecular Solutions for Life Science



## SMAD2/SMAD3 Rabbit pAb

Catalog No.: A18674

19 Publications

### Basic Information

#### Observed MW

52kDa/60kDa

#### Calculated MW

48kDa/52kDa/25kDa/35kDa/43kDa

#### Category

Mouse Monoclonal Antibody

#### Applications

WB, ELISA

#### Cross-Reactivity

Human, Mouse, Rat

### Background

The protein encoded by this gene belongs to the SMAD, a family of proteins similar to the gene products of the Drosophila gene 'mothers against decapentaplegic' (Mad) and the C. elegans gene Sma. SMAD proteins are signal transducers and transcriptional modulators that mediate multiple signaling pathways. This protein functions as a transcriptional modulator activated by transforming growth factor-beta and is thought to play a role in the regulation of carcinogenesis.

### Recommended Dilutions

WB 1:500 - 1:2000

### Immunogen Information

#### Gene ID

4087/4088

#### Swiss Prot

Q15796/P84022

#### Immunogen

A synthetic peptide corresponding to a sequence within amino acids 150-270 of human SMAD2/SMAD3 (NP\_005893.1).

#### Synonyms

HSPC193; HsT17436; JV15-2; LDS1C; LDS3; MADH3; SMAD2/SMAD3

### Contact



[www.abclonal.com](http://www.abclonal.com)

### Product Information

#### Source

Rabbit

#### Isotype

IgG

#### Purification

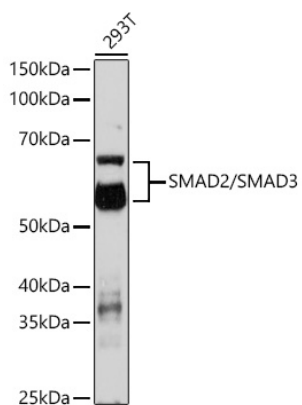
Affinity purification

#### Storage

Store at -20°C. Avoid freeze / thaw cycles.

Buffer: PBS with 0.01% thimerosal, 50% glycerol, pH 7.3.

## Validation Data



Western blot analysis of various lysates using SMAD2/SMAD3 Rabbit pAb (A18674) at 1:1000 dilution.  
Secondary antibody: HRP Goat Anti-Rabbit IgG (H+L) (AS014) at 1:10000 dilution.  
Lysates/proteins: 25µg per lane.  
Blocking buffer: 3% nonfat dry milk in TBST.  
Detection: ECL Enhanced Kit (RM00021).  
Exposure time: 3min.