

A1862

Leader in Biomolecular Solutions for Life Science



DKC1 Rabbit pAb

Catalog No.: A1862

1 Publications

Basic Information

Observed MW

43kDa

Calculated MW

58kDa

Category

Polyclonal Antibody

Applications

WB, IHC-P, IF/ICC, ELISA

Cross-Reactivity

Human, Mouse, Rat

Background

This gene functions in two distinct complexes. It plays an active role in telomerase stabilization and maintenance, as well as recognition of snoRNAs containing H/ACA sequences which provides stability during biogenesis and assembly into H/ACA small nucleolar RNA ribonucleoproteins (snoRNPs). This gene is highly conserved and widely expressed, and may play additional roles in nucleo-cytoplasmic shuttling, DNA damage response, and cell adhesion. Mutations have been associated with X-linked dyskeratosis congenita. Alternative splicing results in multiple transcript variants.

Recommended Dilutions

| | |
|--------|----------------|
| WB | 1:500 - 1:2000 |
| IHC-P | 1:50 - 1:200 |
| IF/ICC | 1:50 - 1:200 |

Immunogen Information

Gene ID

1736

Swiss Prot

O60832

Immunogen

Recombinant fusion protein containing a sequence corresponding to amino acids 245-514 of human DKC1 (NP_001354.1).

Synonyms

DKC; CBF5; DKCX; NAP57; NOLA4; XAP101; DKC1

Contact



www.abclonal.com

Product Information

Source

Rabbit

Isotype

IgG

Purification

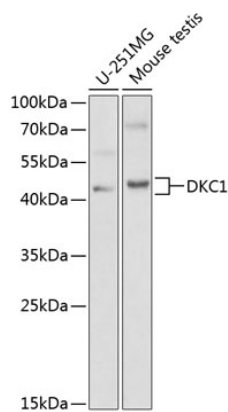
Affinity purification

Storage

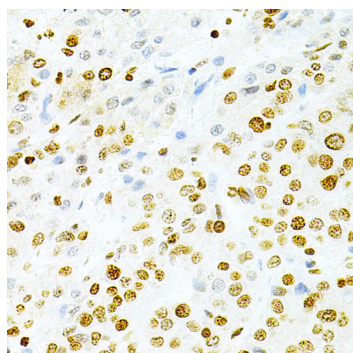
Store at -20°C. Avoid freeze / thaw cycles.

Buffer: PBS with 0.02% sodium azide, 50% glycerol, pH 7.3.

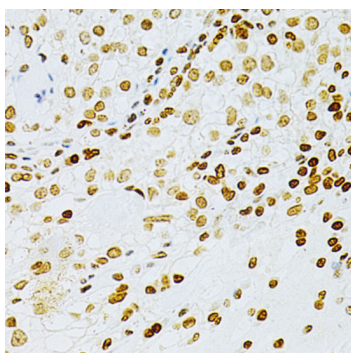
Validation Data



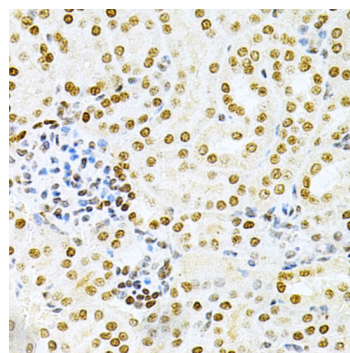
Western blot analysis of extracts of various cell lines, using DKC1 antibody (A1862) at 1:1000 dilution.
Secondary antibody: HRP Goat Anti-Rabbit IgG (H+L) (A5014) at 1:10000 dilution.
Lysates/proteins: 25µg per lane.
Blocking buffer: 3% nonfat dry milk in TBST.



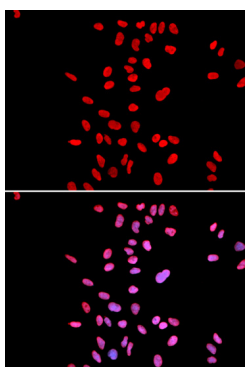
Immunohistochemistry analysis of paraffin-embedded human liver cancer using DKC1 Antibody (A1862) at dilution of 1:200 (40x lens). Perform microwave antigen retrieval with 10 mM PBS buffer pH 7.2 before commencing with IHC staining protocol.



Immunohistochemistry analysis of paraffin-embedded human cancer using DKC1 Antibody (A1862) at dilution of 1:200 (40x lens). Perform microwave antigen retrieval with 10 mM PBS buffer pH 7.2 before commencing with IHC staining protocol.



Immunohistochemistry analysis of paraffin-embedded mouse kidney using DKC1 Antibody (A1862) at dilution of 1:200 (40x lens). Perform microwave antigen retrieval with 10 mM PBS buffer pH 7.2 before commencing with IHC staining protocol.



Immunofluorescence analysis of U2OS cells using DKC1 antibody (A1862). Blue: DAPI for nuclear staining.