

A18331

Leader in Biomolecular Solutions for Life Science



## PTRF Rabbit pAb

Catalog No.: A18331

### Basic Information

#### Observed MW

55kDa

#### Calculated MW

43kDa

#### Category

Polyclonal Antibody

#### Applications

WB,IHC-P,IF/ICC,ELISA

#### Cross-Reactivity

Human,Mouse,Rat

### Background

This gene encodes a protein that enables the dissociation of paused ternary polymerase I transcription complexes from the 3' end of pre-rRNA transcripts. This protein regulates rRNA transcription by promoting the dissociation of transcription complexes and the reinitiation of polymerase I on nascent rRNA transcripts. This protein also localizes to caveolae at the plasma membrane and is thought to play a critical role in the formation of caveolae and the stabilization of caveolins. This protein translocates from caveolae to the cytoplasm after insulin stimulation. Caveolae contain truncated forms of this protein and may be the site of phosphorylation-dependent proteolysis. This protein is also thought to modify lipid metabolism and insulin-regulated gene expression. Mutations in this gene result in a disorder characterized by generalized lipodystrophy and muscular dystrophy.

### Recommended Dilutions

WB 1:500 - 1:2000

IHC-P 1:50 - 1:200

IF/ICC 1:50 - 1:200

### Immunogen Information

#### Gene ID

284119

#### Swiss Prot

Q6NZI2

#### Immunogen

Recombinant fusion protein containing a sequence corresponding to amino acids 200-280 of human PTRF (NP\_036364.2).

#### Synonyms

CGL4; PTRF; CAVIN; FKSG13; cavin-1

### Contact

 [www.abclonal.com](http://www.abclonal.com)

### Product Information

#### Source

Rabbit

#### Isotype

IgG

#### Purification

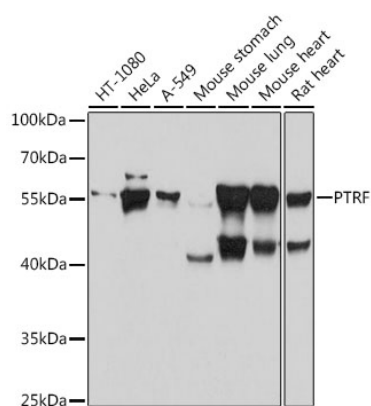
Affinity purification

#### Storage

Store at -20°C. Avoid freeze / thaw cycles.

Buffer: PBS with 0.01% thimerosal, 50% glycerol, pH7.3.

## Validation Data



Western blot analysis of various lysates using PTRF Rabbit pAb (A18331) at 1:1000 dilution.

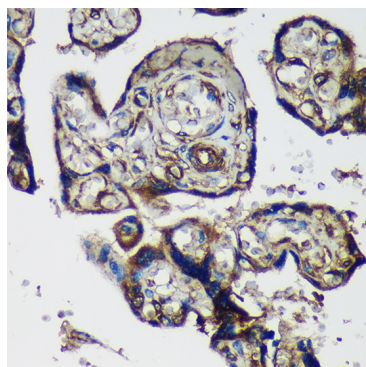
Secondary antibody: HRP Goat Anti-Rabbit IgG (H+L) (AS014) at 1:10000 dilution.

Lysates/proteins: 25µg per lane.

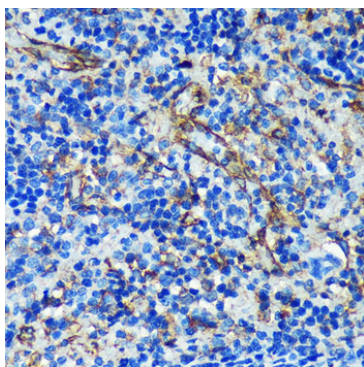
Blocking buffer: 3% nonfat dry milk in TBST.

Detection: ECL Basic Kit (RM00020).

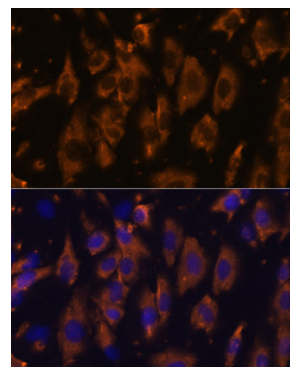
Exposure time: 10s.



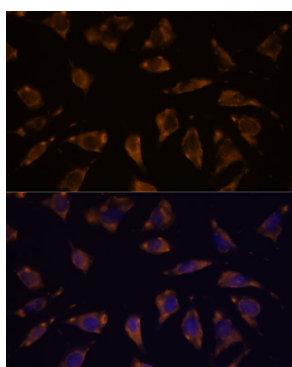
Immunohistochemistry analysis of paraffin-embedded Human placenta using PTRF Rabbit pAb (A18331) at dilution of 1:100 (40x lens). Perform microwave antigen retrieval with 10 mM PBS buffer pH 7.2 before commencing with IHC staining protocol.



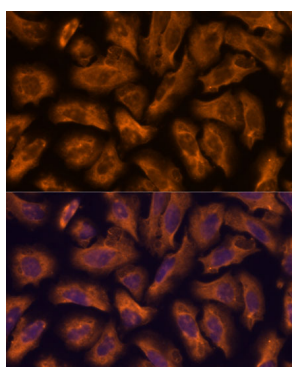
Immunohistochemistry analysis of paraffin-embedded Rat spleen using PTRF Rabbit pAb (A18331) at dilution of 1:100 (40x lens). Perform microwave antigen retrieval with 10 mM PBS buffer pH 7.2 before commencing with IHC staining protocol.



Immunofluorescence analysis of C6 cells using PTRF Rabbit pAb (A18331) at dilution of 1:100. Secondary antibody: Cy3 Goat Anti-Rabbit IgG (H+L) (AS007) at 1:500 dilution. Blue: DAPI for nuclear staining.



Immunofluorescence analysis of L929 cells using PTRF Rabbit pAb (A18331) at dilution of 1:100. Secondary antibody: Cy3 Goat Anti-Rabbit IgG (H+L) (AS007) at 1:500 dilution. Blue: DAPI for nuclear staining.



Immunofluorescence analysis of U-2 OS cells using PTRF Rabbit pAb (A18331) at dilution of 1:100. Secondary antibody: Cy3 Goat Anti-Rabbit IgG (H+L) (AS007) at 1:500 dilution. Blue: DAPI for nuclear staining.