

A18257

Leader in Biomolecular Solutions for Life Science



## [KO Validated] ATM Rabbit pAb

Catalog No.: A18257 **KO** Validated

### Basic Information

#### Observed MW

350kDa

#### Calculated MW

351kDa

#### Category

Polyclonal Antibody

#### Applications

WB, ELISA

#### Cross-Reactivity

Human

### Background

The protein encoded by this gene belongs to the PI3/PI4-kinase family. This protein is an important cell cycle checkpoint kinase that phosphorylates; thus, it functions as a regulator of a wide variety of downstream proteins, including tumor suppressor proteins p53 and BRCA1, checkpoint kinase CHK2, checkpoint proteins RAD17 and RAD9, and DNA repair protein NBS1. This protein and the closely related kinase ATR are thought to be master controllers of cell cycle checkpoint signaling pathways that are required for cell response to DNA damage and for genome stability. Mutations in this gene are associated with ataxia telangiectasia, an autosomal recessive disorder.

### Recommended Dilutions

WB 1:500 - 1:1000

### Immunogen Information

#### Gene ID

472

#### Swiss Prot

Q13315

#### Immunogen

Recombinant fusion protein containing a sequence corresponding to amino acids 2320-2566 of ATM (NP\_000042.3).

#### Synonyms

AT1; ATA; ATC; ATD; ATE; ATDC; TEL1; TELO1; TM

### Contact



[www.abclonal.com](http://www.abclonal.com)

### Product Information

#### Source

Rabbit

#### Isotype

IgG

#### Purification

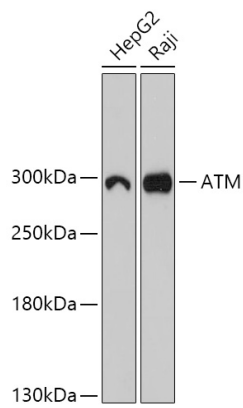
Affinity purification

#### Storage

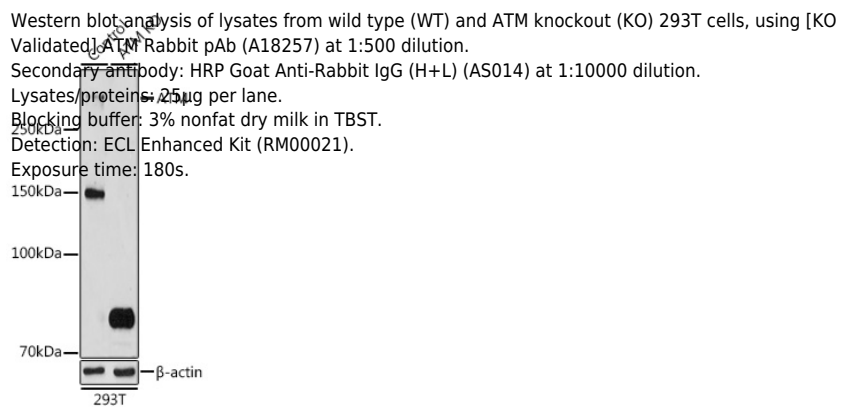
Store at -20°C. Avoid freeze / thaw cycles.

Buffer: PBS with 0.01% thimerosal, 50% glycerol, pH 7.3.

## Validation Data



Western blot analysis of various lysates using [KO Validated] ATM Rabbit pAb (A18257) at 1:1000 dilution.  
Secondary antibody: HRP Goat Anti-Rabbit IgG (H+L) (AS014) at 1:10000 dilution.  
Lysates/proteins: 25µg per lane.  
Blocking buffer: 3% nonfat dry milk in TBST.  
Detection: ECL Basic Kit (RM00020).  
Exposure time: 3min.



Western blot analysis of lysates from wild type (WT) and ATM knockout (KO) 293T cells, using [KO Validated] ATM Rabbit pAb (A18257) at 1:500 dilution.  
Secondary antibody: HRP Goat Anti-Rabbit IgG (H+L) (AS014) at 1:10000 dilution.  
Lysates/proteins: 25µg per lane.  
Blocking buffer: 3% nonfat dry milk in TBST.  
Detection: ECL Enhanced Kit (RM00021).  
Exposure time: 180s.