

A18225

Leader in Biomolecular Solutions for Life Science



## CXCL12 Rabbit pAb

Catalog No.: A18225

2 Publications

### Basic Information

#### Observed MW

11kDa

#### Calculated MW

11kDa

#### Category

Polyclonal Antibody

#### Applications

WB, IHC-P, IF/ICC, ELISA

#### Cross-Reactivity

Human, Mouse, Rat

### Background

This antimicrobial gene encodes a stromal cell-derived alpha chemokine member of the intercrine family. The encoded protein functions as the ligand for the G-protein coupled receptor, chemokine (C-X-C motif) receptor 4, and plays a role in many diverse cellular functions, including embryogenesis, immune surveillance, inflammation response, tissue homeostasis, and tumor growth and metastasis. Mutations in this gene are associated with resistance to human immunodeficiency virus type 1 infections. Multiple transcript variants encoding different isoforms have been found for this gene.

### Recommended Dilutions

|        |                |
|--------|----------------|
| WB     | 1:500 - 1:2000 |
| IHC-P  | 1:50 - 1:200   |
| IF/ICC | 1:50 - 1:200   |

### Immunogen Information

#### Gene ID

6387

#### Swiss Prot

P48061

#### Immunogen

A synthetic peptide corresponding to a sequence within amino acids 40-93 of human CXCL12 (NP\_000600.1).

#### Synonyms

IRH; PBSF; SDF1; TLSF; TPAR1; SCYB12; CXCL12

### Contact



[www.abclonal.com](http://www.abclonal.com)

### Product Information

#### Source

Rabbit

#### Isotype

IgG

#### Purification

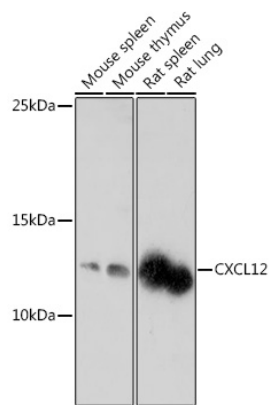
Affinity purification

#### Storage

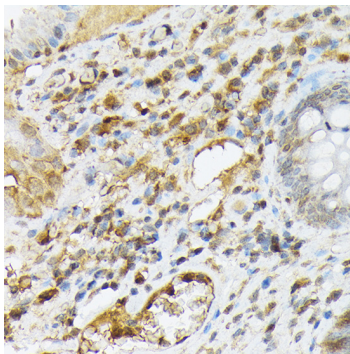
Store at -20°C. Avoid freeze / thaw cycles.

Buffer: PBS with 0.05% proclin300, 50% glycerol, pH7.3.

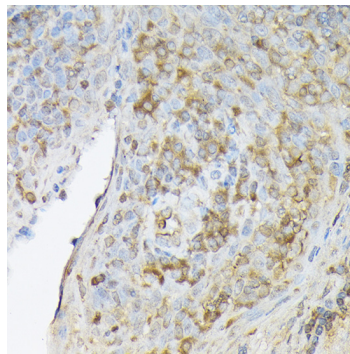
## Validation Data



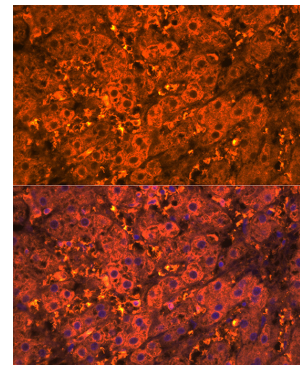
Western blot analysis of extracts of various cell lines, using CXCL12 antibody (A18225) at 1:1000 dilution.  
 Secondary antibody: HRP Goat Anti-Rabbit IgG (H+L) (A5014) at 1:10000 dilution.  
 Lysates/proteins: 25µg per lane.  
 Blocking buffer: 3% nonfat dry milk in TBST.  
 Detection: ECL Enhanced Kit (RM00021).  
 Exposure time: 3min.



Immunohistochemistry analysis of paraffin-embedded human gastric cancer using CXCL12 Rabbit pAb (A18225) at dilution of 1:200 (40x lens). Perform high pressure antigen retrieval with 10 mM citrate buffer pH 6.0 before commencing with IHC staining protocol.



Immunohistochemistry analysis of paraffin-embedded human tonsil using CXCL12 Rabbit pAb (A18225) at dilution of 1:200 (40x lens). Perform high pressure antigen retrieval with 10 mM citrate buffer pH 6.0 before commencing with IHC staining protocol.



Immunofluorescence analysis of human liver cells using CXCL12 Rabbit pAb (A18225) at dilution of 1:100 (40x lens). Blue: DAPI for nuclear staining.