

A18218

Leader in Biomolecular Solutions for Life Science



PHLPP2 Rabbit pAb

Catalog No.: A18218

2 Publications

Basic Information

Observed MW

140kDa

Calculated MW

147kDa

Category

Polyclonal Antibody

Applications

WB, IF/ICC, ELISA

Cross-Reactivity

Human, Mouse, Rat

Background

Predicted to enable protein serine/threonine phosphatase activity. Predicted to be involved in signal transduction. Located in several cellular components, including intercellular bridge; mitotic spindle; and nucleoplasm.

Recommended Dilutions

WB	1:500 - 1:2000
IF/ICC	1:50 - 1:200

Immunogen Information

Gene ID

23035

Swiss Prot

Q6ZVD8

Immunogen

A synthetic peptide corresponding to a sequence within amino acids 1250-1323 of human PHLPP2 (NP_055835.2).

Synonyms

PPM3B; PHLPL; PHLPP2

Contact



www.abclonal.com

Product Information

Source

Rabbit

Isotype

IgG

Purification

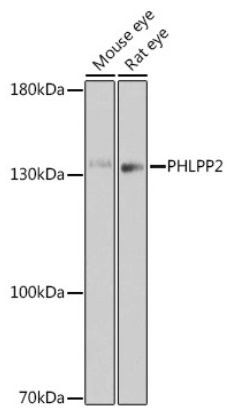
Affinity purification

Storage

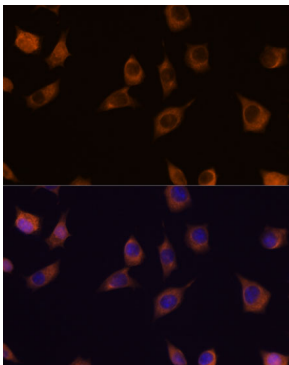
Store at -20°C. Avoid freeze / thaw cycles.

Buffer: PBS with 0.01% thimerosal, 50% glycerol, pH 7.3.

Validation Data



Western blot analysis of various lysates using PHLPP2 Rabbit pAb (A18218) at 1:1000 dilution.
Secondary antibody: HRP Goat Anti-Rabbit IgG (H+L) (AS014) at 1:10000 dilution.
Lysates/proteins: 25µg per lane.
Blocking buffer: 3% nonfat dry milk in TBST.
Detection: ECL Basic Kit (RM00020).
Exposure time: 180s.



Immunofluorescence analysis of L929 cells using PHLPP2 Rabbit pAb (A18218) at dilution of 1:100. Secondary antibody: Cy3 Goat Anti-Rabbit IgG (H+L) (AS007) at 1:500 dilution. Blue: DAPI for nuclear staining.