

A18210

Leader in Biomolecular Solutions for Life Science



NF-kB p65/RelA Mouse mAb

Catalog No.: A18210

3 Publications

Basic Information

Observed MW

65kDa

Calculated MW

60kDa

Category

Mouse Monoclonal Antibody

Applications

WB,IF/ICC,ELISA

Cross-Reactivity

Human,Mouse,Rat

CloneNo number

AMC0222

Background

NF-kappa-B is a ubiquitous transcription factor involved in several biological processes. It is held in the cytoplasm in an inactive state by specific inhibitors. Upon degradation of the inhibitor, NF-kappa-B moves to the nucleus and activates transcription of specific genes. NF-kappa-B is composed of NFKB1 or NFKB2 bound to either REL, RELA, or RELB. The most abundant form of NF-kappa-B is NFKB1 complexed with the product of this gene, RELA. Four transcript variants encoding different isoforms have been found for this gene.

Recommended Dilutions

WB	1:500 - 1:1000
IF/ICC	1:50 - 1:200

Immunogen Information

Gene ID	Swiss Prot
5970	Q04206

Immunogen

A synthetic peptide corresponding to a sequence within amino acids 450-551 of human NF-kB p65/RelA (Q04206).

Synonyms

p65; CMCU; NFKB3; AIF3BL3; NF-kB p65/RelA

Contact



www.abclonal.com

Product Information

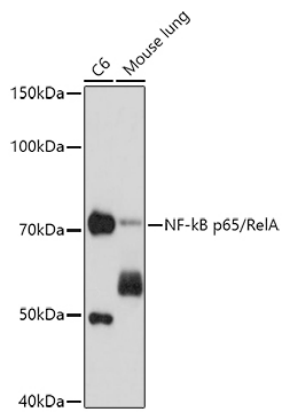
Source	Isotype	Purification
Mouse	IgG2b,kappa	Affinity purification

Storage

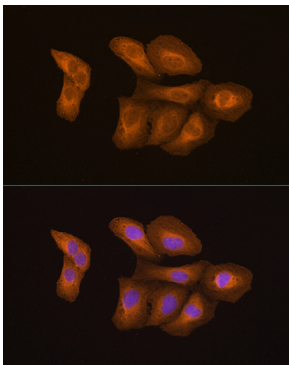
Store at -20°C. Avoid freeze / thaw cycles.

Buffer: PBS with 0.01% thimerosal,50% glycerol,pH7.3.

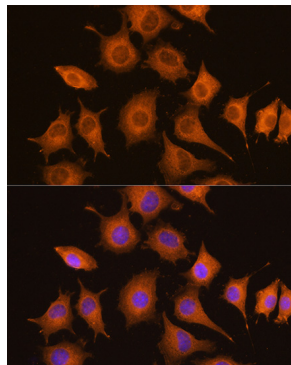
Validation Data



Western blot analysis of various lysates using NF-kB p65/RelA Mouse mAb (A18210) at 1:1000 dilution.
Secondary antibody: HRP Goat Anti-Mouse IgG (H+L) (A5003) at 1:10000 dilution.
Lysates/proteins: 25µg per lane.
Blocking buffer: 3% nonfat dry milk in TBST.
Detection: ECL Basic Kit (RM00020).
Exposure time: 90s.



Immunofluorescence analysis of U2OS cells using NF-kB p65/RelA Mouse mAb (A18210) at dilution of 1:100. Blue: DAPI for nuclear staining.



Immunofluorescence analysis of L929 cells using NF-kB p65/RelA Mouse mAb (A18210) at dilution of 1:100. Blue: DAPI for nuclear staining.