

A18081

Leader in Biomolecular Solutions for Life Science



[KD Validated] DIAPH1 Rabbit pAb

Catalog No.: A18081

Basic Information

Observed MW

150kDa

Calculated MW

141kDa

Category

Polyclonal Antibody

Applications

WB, ELISA

Cross-Reactivity

Human

Background

This gene is a homolog of the Drosophila diaphanous gene, and has been linked to autosomal dominant, fully penetrant, nonsyndromic sensorineural progressive low-frequency hearing loss. Actin polymerization involves proteins known to interact with diaphanous protein in Drosophila and mouse. It has therefore been speculated that this gene may have a role in the regulation of actin polymerization in hair cells of the inner ear. Alternatively spliced transcript variants encoding distinct isoforms have been found for this gene.

Recommended Dilutions

WB 1:500 - 1:2000

Immunogen Information

Gene ID

1729

Swiss Prot

O60610

Immunogen

Recombinant fusion protein containing a sequence corresponding to amino acids 1158-1272 of human DIAPH1 (NP_005210.3).

Synonyms

DIA1; DRF1; DFNA1; LFHL1; SCBMS; hDIA1; mDia1; [KD Validated] DIAPH1

Contact



www.abclonal.com

Product Information

Source

Rabbit

Isotype

IgG

Purification

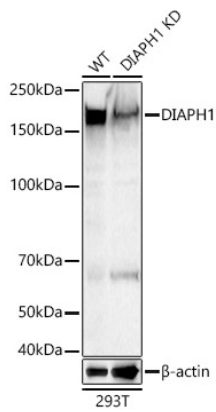
Affinity purification

Storage

Store at -20°C. Avoid freeze / thaw cycles.

Buffer: PBS with 0.05% proclin300, 50% glycerol, pH7.3.

Validation Data



Western blot analysis of lysates from wild type (WT) and DIAPH1 knockdown (KD) 293T cells, using [KD Validated] DIAPH1 Rabbit pAb (A18081) at 1:600 dilution.
Secondary antibody: HRP Goat Anti-Rabbit IgG (H+L) (AS014) at 1:10000 dilution.
Lysates/proteins: 25 μ g per lane.
Blocking buffer: 3% nonfat dry milk in TBST.
Detection: ECL Basic Kit (RM00020).
Exposure time: 1s.