

IL6ST Rabbit pAb

Catalog No.: A18036 **1 Publications**

Basic Information

Observed MW

150kDa

Calculated MW

104kDa

Category

Primary antibody

Applications

ELISA, WB, IF/ICC

Cross-Reactivity

Human, Mouse, Rat

Background

The protein encoded by this gene is a signal transducer shared by many cytokines, including interleukin 6 (IL6), ciliary neurotrophic factor (CNTF), leukemia inhibitory factor (LIF), and oncostatin M (OSM). This protein functions as a part of the cytokine receptor complex. The activation of this protein is dependent upon the binding of cytokines to their receptors. vIL6, a protein related to IL6 and encoded by the Kaposi sarcoma-associated herpesvirus, can bypass the interleukin 6 receptor (IL6R) and directly activate this protein. Knockout studies in mice suggest that this gene plays a critical role in regulating myocyte apoptosis. Alternatively spliced transcript variants have been described. A related pseudogene has been identified on chromosome 17.

Recommended Dilutions

WB 1:500 - 1:1000**IF/ICC** 1:50 - 1:200

Immunogen Information

Gene ID

3572

Swiss Prot

P40189

Immunogen

Recombinant fusion protein containing a sequence corresponding to amino acids 751-918 of human IL6ST (NP_002175.2).

Synonyms

CD130; GP130; HIES4; IMD94; STWS2; CDW130; HIES4A; HIES4B; IL-6RB; sGP130; IL6ST

Contact

 | www.abclonal.com

Product Information

Source

Rabbit

Isotype

IgG

Purification

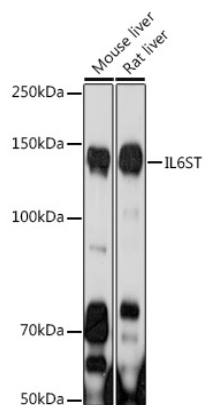
Affinity purification

Storage

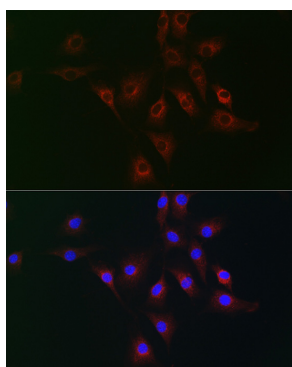
Store at -20°C. Avoid freeze / thaw cycles.

Buffer: PBS with 0.01% thimerosal, 50% glycerol, pH7.3.

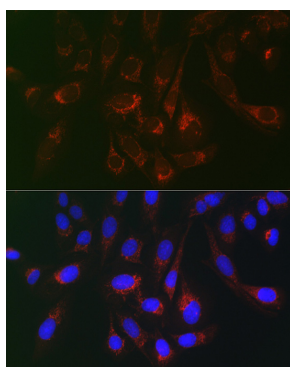
Validation Data



Western blot analysis of various lysates using IL6ST Rabbit pAb (A18036) at 1:1000 dilution.
Secondary antibody: HRP Goat Anti-Rabbit IgG (H+L) (AS014) at 1:10000 dilution.
Lysates/proteins: 25µg per lane.
Blocking buffer: 3% nonfat dry milk in TBST.
Detection: ECL Basic Kit (RM00020).
Exposure time: 90s.



Immunofluorescence analysis of NIH/3T3 cells using IL6ST Rabbit pAb (A18036) at dilution of 1:100 (40x lens). Secondary antibody: Cy3 Goat Anti-Rabbit IgG (H+L) (AS007) at 1:500 dilution. Blue: DAPI for nuclear staining.



Immunofluorescence analysis of U2OS cells using IL6ST Rabbit pAb (A18036) at dilution of 1:100 (40x lens). Secondary antibody: Cy3 Goat Anti-Rabbit IgG (H+L) (AS007) at 1:500 dilution. Blue: DAPI for nuclear staining.