

A18006

Leader in Biomolecular Solutions for Life Science



## [KO Validated] Calpain 1 Rabbit pAb

Catalog No.: A18006 **KO** Validated

### Basic Information

#### Observed MW

75kDa

#### Calculated MW

82kDa

#### Category

Polyclonal Antibody

#### Applications

WB, ELISA

#### Cross-Reactivity

Human

### Background

The calpains, calcium-activated neutral proteases, are nonlysosomal, intracellular cysteine proteases. The mammalian calpains include ubiquitous, stomach-specific, and muscle-specific proteins. The ubiquitous enzymes consist of heterodimers with distinct large, catalytic subunits associated with a common small, regulatory subunit. This gene encodes the large subunit of the ubiquitous enzyme, calpain 1. Several transcript variants encoding two different isoforms have been found for this gene.

### Recommended Dilutions

WB 1:500 - 1:2000

### Immunogen Information

#### Gene ID

823

#### Swiss Prot

P07384

#### Immunogen

Recombinant fusion protein containing a sequence corresponding to amino acids 20-330 of human Calpain 1 (NP\_005177.2).

#### Synonyms

CANP; muCL; CANP1; SPG76; CANPL1; muCANP; 1

### Contact



[www.abclonal.com](http://www.abclonal.com)

### Product Information

#### Source

Rabbit

#### Isotype

IgG

#### Purification

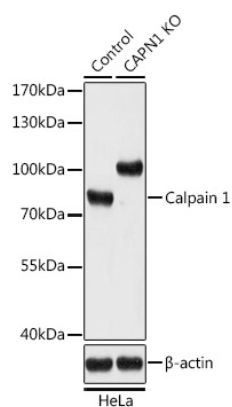
Affinity purification

#### Storage

Store at -20°C. Avoid freeze / thaw cycles.

Buffer: PBS with 0.01% thimerosal, 50% glycerol, pH 7.3.

## Validation Data



Western blot analysis of lysates from wild type (WT) and Calpain 1 knockout (KO) HeLa cells, using [KO Validated] Calpain 1 Rabbit pAb (A18006) at 1:1000 dilution.  
Secondary antibody: HRP Goat Anti-Rabbit IgG (H+L) (AS014) at 1:10000 dilution.  
Lysates/proteins: 25µg per lane.  
Blocking buffer: 3% nonfat dry milk in TBST.  
Detection: ECL Basic Kit (RM00020).  
Exposure time: 10s.