

A18002

Leader in Biomolecular Solutions for Life Science



## [KO Validated] Bak Rabbit pAb

Catalog No.: A18002 **KO** Validated

### Basic Information

#### Observed MW

25kDa

#### Calculated MW

23kDa

#### Category

Polyclonal Antibody

#### Applications

WB, ELISA

#### Cross-Reactivity

Human, Rat

### Background

The protein encoded by this gene belongs to the BCL2 protein family. BCL2 family members form oligomers or heterodimers and act as anti- or pro-apoptotic regulators that are involved in a wide variety of cellular activities. This protein localizes to mitochondria, and functions to induce apoptosis. It interacts with and accelerates the opening of the mitochondrial voltage-dependent anion channel, which leads to a loss in membrane potential and the release of cytochrome c. This protein also interacts with the tumor suppressor P53 after exposure to cell stress.

### Recommended Dilutions

WB 1:500 - 1:2000

### Immunogen Information

#### Gene ID

578

#### Swiss Prot

Q16611

#### Immunogen

A synthetic peptide corresponding to a sequence within amino acids 1-100 of human Bak (NP\_001179.1).

#### Synonyms

BAK; CDN1; BCL2L7; BAK-LIKE; ak

### Contact



[www.abclonal.com](http://www.abclonal.com)

### Product Information

#### Source

Rabbit

#### Isotype

IgG

#### Purification

Affinity purification

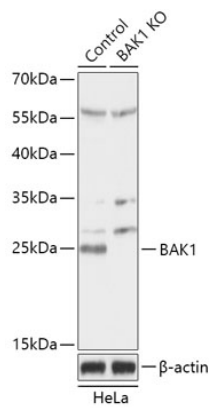
#### Storage

Store at -20°C. Avoid freeze / thaw cycles.

Buffer: PBS with 0.01% thimerosal, 50% glycerol, pH 7.3.

## Validation Data

---



Western blot analysis of lysates from wild type (WT) and Bak knockout (KO) HeLa cells, using [KO Validated] Bak Rabbit pAb (A18002) at 1:1000 dilution.  
Secondary antibody: HRP Goat Anti-Rabbit IgG (H+L) (AS014) at 1:10000 dilution.  
Lysates/proteins: 25 $\mu$ g per lane.  
Blocking buffer: 3% nonfat dry milk in TBST.  
Detection: ECL Basic Kit (RM00020).  
Exposure time: 10s.