

A1800

Leader in Biomolecular Solutions for Life Science



## XRCC2 Rabbit pAb

Catalog No.: A1800

6 Publications

### Basic Information

#### Observed MW

32kDa

#### Calculated MW

32kDa

#### Category

Polyclonal Antibody

#### Applications

WB, IHC-P, ELISA

#### Cross-Reactivity

Human, Mouse, Rat

### Background

This gene encodes a member of the RecA/Rad51-related protein family that participates in homologous recombination to maintain chromosome stability and repair DNA damage. This gene is involved in the repair of DNA double-strand breaks by homologous recombination and it functionally complements Chinese hamster irs1, a repair-deficient mutant that exhibits hypersensitivity to a number of different DNA-damaging agents.

### Recommended Dilutions

WB	1:100 - 1:500
IHC-P	1:50 - 1:200

### Immunogen Information

#### Gene ID

7516

#### Swiss Prot

O43543

#### Immunogen

Recombinant fusion protein containing a sequence corresponding to amino acids 1-83 of human XRCC2 (NP\_005422.1).

#### Synonyms

FANCU; POF17; SPGF50; XRCC2

### Contact



[www.abclonal.com](http://www.abclonal.com)

### Product Information

#### Source

Rabbit

#### Isotype

IgG

#### Purification

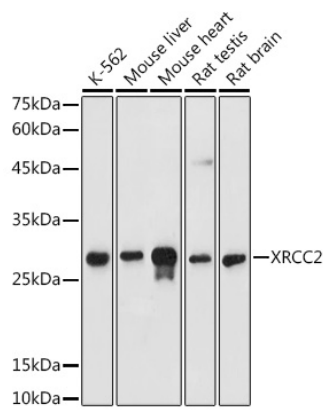
Affinity purification

#### Storage

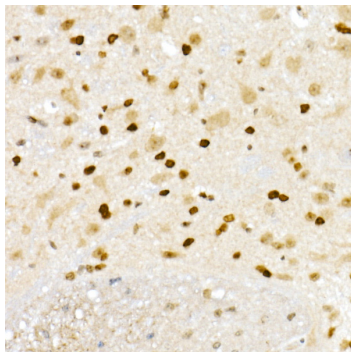
Store at -20°C. Avoid freeze / thaw cycles.

Buffer: PBS with 0.05% proclin300, 50% glycerol, pH7.3.

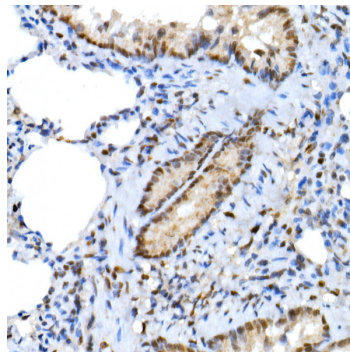
## Validation Data



Western blot analysis of various lysates using XRCC2 Rabbit pAb (A1800) at 1:500 dilution. Secondary antibody: HRP Goat Anti-Rabbit IgG (H+L) (AS014) at 1:10000 dilution. Lysates/proteins: 25µg per lane. Blocking buffer: 3% nonfat dry milk in TBST. Detection: ECL Basic Kit (RM00020). Exposure time: 180s.



Immunohistochemistry analysis of XRCC2 in paraffin-embedded mouse spinal cord using XRCC2 Rabbit pAb (A1800) at dilution of 1:50 (40x lens). Perform high pressure antigen retrieval with 10 mM citrate buffer pH 6.0 before commencing with IHC staining protocol.



Immunohistochemistry analysis of XRCC2 in paraffin-embedded rat lung using XRCC2 Rabbit pAb (A1800) at dilution of 1:50 (40x lens). Perform high pressure antigen retrieval with 10 mM citrate buffer pH 6.0 before commencing with IHC staining protocol.