

A17889

Leader in Biomolecular Solutions for Life Science



MTCO1 Rabbit pAb

Catalog No.: A17889

10 Publications

Basic Information

Observed MW

40kDa/37kDa

Calculated MW

57kDa

Category

Polyclonal Antibody

Applications

WB, IHC-P, IF/ICC, ELISA

Cross-Reactivity

Human, Mouse, Rat

Background

Contributes to cytochrome-c oxidase activity. Predicted to be involved in electron transport coupled proton transport and mitochondrial electron transport, cytochrome c to oxygen. Part of mitochondrial respiratory chain complex III and mitochondrial respiratory chain complex IV.

Recommended Dilutions

WB	1:500 - 1:1000
IHC-P	1:50 - 1:200
IF/ICC	1:50 - 1:200

Immunogen Information

Gene ID

4512

Swiss Prot

P00395

Immunogen

A synthetic peptide corresponding to a sequence within amino acids 400-500 of human MTCO1 (YP_002124304.1).

Synonyms

COI; MTCO1; COX1

Contact



www.abclonal.com

Product Information

Source

Rabbit

Isotype

IgG

Purification

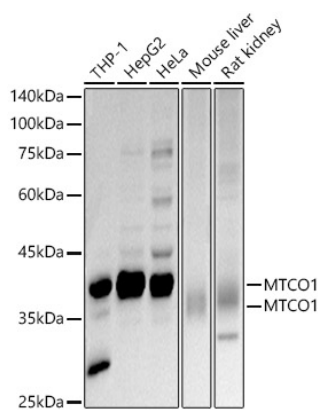
Affinity purification

Storage

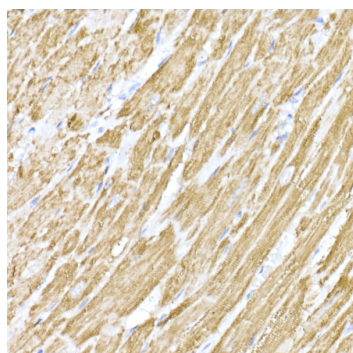
Store at -20°C. Avoid freeze / thaw cycles.

Buffer: PBS with 0.05% proclin300, 50% glycerol, pH7.3.

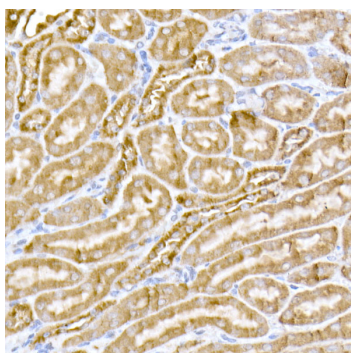
Validation Data



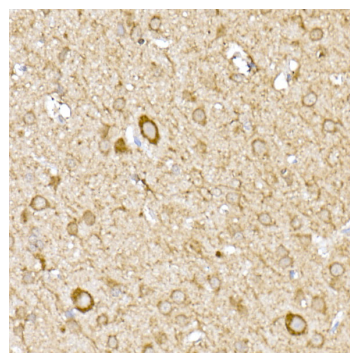
Western blot analysis of extracts of various cell lines, using MTCO1 antibody (A17889) at 1:1000 dilution.
 Secondary antibody: HRP Goat Anti-Rabbit IgG (H+L) (A5014) at 1:10000 dilution.
 Lysates/proteins: 25µg per lane.
 Blocking buffer: 3% nonfat dry milk in TBST.
 Detection: ECL Basic Kit (RM00020).
 Exposure time: 30s.



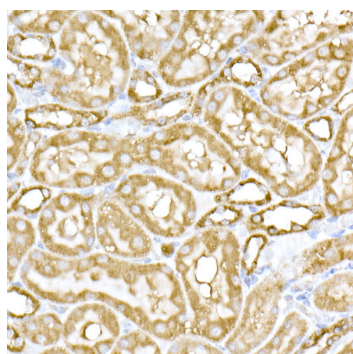
Immunohistochemistry analysis of paraffin-embedded mouse heart using MTCO1 Rabbit pAb (A17889) at dilution of 1:100 (40x lens). Perform high pressure antigen retrieval with 10 mM citrate buffer pH 6.0 before commencing with IHC staining protocol.



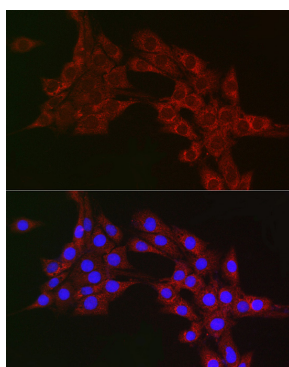
Immunohistochemistry analysis of paraffin-embedded mouse kidney using MTCO1 Rabbit pAb (A17889) at dilution of 1:100 (40x lens). Perform high pressure antigen retrieval with 10 mM citrate buffer pH 6.0 before commencing with IHC staining protocol.



Immunohistochemistry analysis of paraffin-embedded rat brain using MTCO1 Rabbit pAb (A17889) at dilution of 1:100 (40x lens). Perform high pressure antigen retrieval with 10 mM citrate buffer pH 6.0 before commencing with IHC staining protocol.



Immunohistochemistry analysis of paraffin-embedded rat kidney using MTCO1 Rabbit pAb (A17889) at dilution of 1:100 (40x lens). Perform high pressure antigen retrieval with 10 mM citrate buffer pH 6.0 before commencing with IHC staining protocol.



Immunofluorescence analysis of PC-12 cells using MTCO1 Rabbit pAb (A17889) at dilution of 1:100 (40x lens). Blue: DAPI for nuclear staining.