

BUB1B Rabbit pAb

Catalog No.: A1775 **1 Publications**

Basic Information

Observed MW

55kDa/120kDa

Calculated MW

120kDa

Category

Primary antibody

Applications

ELISA, WB, IF/ICC

Cross-Reactivity

Human, Mouse, Rat

Background

This gene encodes a kinase involved in spindle checkpoint function. The protein has been localized to the kinetochore and plays a role in the inhibition of the anaphase-promoting complex/cyclosome (APC/C), delaying the onset of anaphase and ensuring proper chromosome segregation. Impaired spindle checkpoint function has been found in many forms of cancer.

Recommended Dilutions

WB	1:500 - 1:2000
IF/ICC	1:50 - 1:200

Immunogen Information

Gene ID	Swiss Prot
701	O60566

Immunogen

Recombinant fusion protein containing a sequence corresponding to amino acids 1-260 of human BUB1B (NP_001202.4).

Synonyms

MVA1; SSK1; BUBR1; Bub1A; MAD3L; hBUBR1; BUB1beta; BUB1B

Contact

 | www.abclonal.com

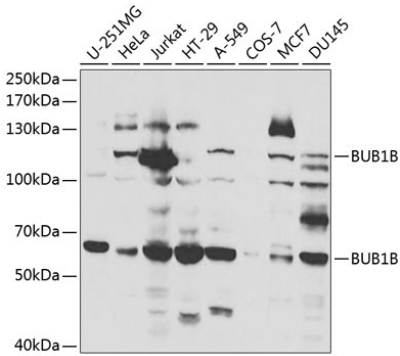
Product Information

Source	Isotype	Purification
Rabbit	IgG	Affinity purification

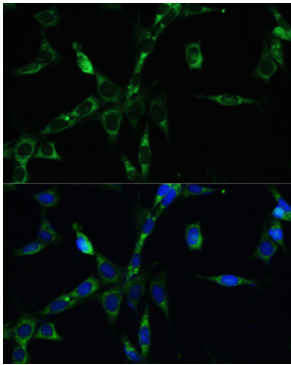
Storage

Store at -20°C. Avoid freeze / thaw cycles.
Buffer: PBS with 0.02% sodium azide, 50% glycerol, pH7.3.

Validation Data



Western blot analysis of extracts of various cell lines, using BUB1B antibody (A1775) at 1:1000 dilution.
Secondary antibody: HRP Goat Anti-Rabbit IgG (H+L) (A5014) at 1:10000 dilution.
Lysates/proteins: 25µg per lane.
Blocking buffer: 3% nonfat dry milk in TBST.



Immunofluorescence analysis of NIH-3T3 cells using BUB1B antibody (A1775) at dilution of 1:100. Blue: DAPI for nuclear staining.