

RANBP10 Rabbit pAb

Catalog No.: A17742

Basic Information

Observed MW

73kDa

Calculated MW

67kDa

Category

Primary antibody

Applications

ELISA, WB

Cross-Reactivity

Human, Mouse

Background

RAN is a small GTPase involved in the assembly of microtubules to form mitotic spindles. The protein encoded by this gene is a cytoplasmic guanine nucleotide exchange factor (GEF) that binds beta-tubulin and has GEF activity toward RAN. The encoded protein plays a role in the formation of noncentrosomal microtubules. In addition, this protein may be involved in the regulation of D(1) receptor signaling by protein kinase C delta and protein kinase C gamma. Several transcript variants encoding different isoforms have been found for this gene.

Recommended Dilutions

WB 1:500 - 1:2000

Immunogen Information

Gene ID

57610

Swiss Prot

Q6VN20

Immunogen

Recombinant fusion protein containing a sequence corresponding to amino acids 362-497 of human RANBP10 (NP_065901.1).

Synonyms

RANBP10

Contact

 | www.abclonal.com

Product Information

Source

Rabbit

Isotype

IgG

Purification

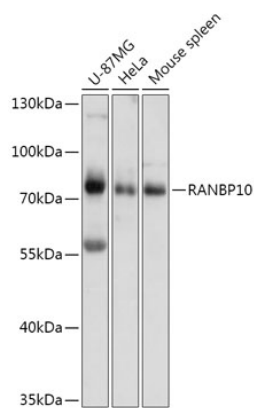
Affinity purification

Storage

Store at -20°C. Avoid freeze / thaw cycles.

Buffer: PBS with 0.01% thimerosal, 50% glycerol, pH7.3.

Validation Data



Western blot analysis of various lysates using RANBP10 Rabbit pAb (A17742) at 1:1000 dilution.
Secondary antibody: HRP Goat Anti-Rabbit IgG (H+L) (A5014) at 1:10000 dilution.
Lysates/proteins: 25µg per lane.
Blocking buffer: 3% nonfat dry milk in TBST.
Detection: ECL Basic Kit (RM00020).
Exposure time: 10s.