

A17725

Leader in Biomolecular Solutions for Life Science



RAB20 Rabbit pAb

Catalog No.: A17725

Basic Information

Observed MW

26kDa

Calculated MW

26kDa

Category

Polyclonal Antibody

Applications

WB,IF/ICC,ELISA

Cross-Reactivity

Mouse

Background

Predicted to enable GTPase activity. Involved in phagosome acidification and phagosome-lysosome fusion. Located in Golgi apparatus and phagocytic vesicle.

Recommended Dilutions

WB 1:500 - 1:2000

IF/ICC 1:50 - 1:200

Immunogen Information

Gene ID

55647

Swiss Prot

Q9NX57

Immunogen

Recombinant fusion protein containing a sequence corresponding to amino acids 80-190 of human RAB20 (NP_060287.1).

Synonyms

RAB20

Contact



www.abclonal.com

Product Information

Source

Rabbit

Isotype

IgG

Purification

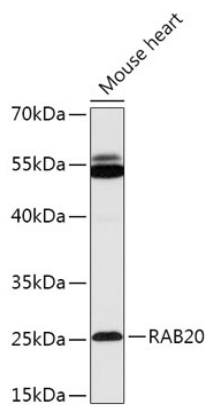
Affinity purification

Storage

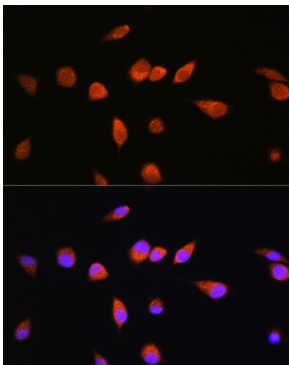
Store at -20°C. Avoid freeze / thaw cycles.

Buffer: PBS with 0.01% thimerosal, 50% glycerol, pH7.3.

Validation Data



Western blot analysis of lysates from Mouse heart, using RAB20 Rabbit pAb (A17725) at 1:1000 dilution.
Secondary antibody: HRP Goat Anti-Rabbit IgG (H+L) (AS014) at 1:10000 dilution.
Lysates/proteins: 25µg per lane.
Blocking buffer: 3% nonfat dry milk in TBST.
Detection: ECL Basic Kit (RM00020).
Exposure time: 15s.



Immunofluorescence analysis of L929 cells using RAB20 Rabbit pAb (A17725) at dilution of 1:100. Secondary antibody: Cy3 Goat Anti-Rabbit IgG (H+L) (AS007) at 1:500 dilution. Blue: DAPI for nuclear staining.