

A1758

Leader in Biomolecular Solutions for Life Science



## Vinculin Rabbit pAb

Catalog No.: A1758

### Basic Information

**Observed MW**

124kDa

**Calculated MW**

124kDa

**Category**

Polyclonal Antibody

**Applications**

WB, ELISA

**Cross-Reactivity**

Human, Mouse, Rat

### Background

Vinculin is a cytoskeletal protein associated with cell-cell and cell-matrix junctions, where it is thought to function as one of several interacting proteins involved in anchoring F-actin to the membrane. Defects in VCL are the cause of cardiomyopathy dilated type 1W. Dilated cardiomyopathy is a disorder characterized by ventricular dilation and impaired systolic function, resulting in congestive heart failure and arrhythmia. Multiple alternatively spliced transcript variants have been found for this gene, but the biological validity of some variants has not been determined.

### Recommended Dilutions

WB 1:500 - 1:1000

### Immunogen Information

**Gene ID**

7414

**Swiss Prot**

P18206

**Immunogen**

A synthetic peptide corresponding to a sequence within amino acids 767-1066 of human Vinculin (NP\_003364.1).

**Synonyms**

MV; MVCL; CMD1W; CMH15; HEL114; Vinculin

### Contact



[www.abclonal.com](http://www.abclonal.com)

### Product Information

**Source**

Rabbit

**Isotype**

IgG

**Purification**

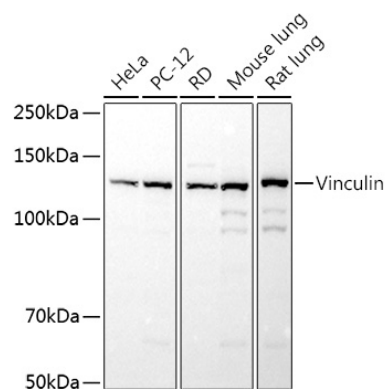
Affinity purification

**Storage**

Store at -20°C. Avoid freeze / thaw cycles.

Buffer: PBS with 0.05% proclin300, 50% glycerol, pH7.3.

## Validation Data



Western blot analysis of extracts of various cell lines, using Vinculin antibody (A1758) at 1:1000 dilution.  
Secondary antibody: HRP Goat Anti-Rabbit IgG (H+L) (AS014) at 1:10000 dilution.  
Lysates/proteins: 25µg per lane.  
Blocking buffer: 3% nonfat dry milk in TBST.  
Detection: ECL Basic Kit (RM00020).  
Exposure time: 1s.