

A17339

Leader in Biomolecular Solutions for Life Science



CD36/SR-B3 Rabbit pAb

Catalog No.: A17339

2 Publications

Basic Information

Observed MW

70-110kDa

Calculated MW

53kDa

Category

Polyclonal Antibody

Applications

WB, IHC-P, ELISA

Cross-Reactivity

Human, Mouse, Rat

Background

The protein encoded by this gene is the fourth major glycoprotein of the platelet surface and serves as a receptor for thrombospondin in platelets and various cell lines. Since thrombospondins are widely distributed proteins involved in a variety of adhesive processes, this protein may have important functions as a cell adhesion molecule. It binds to collagen, thrombospondin, anionic phospholipids and oxidized LDL. It directly mediates cytoadherence of Plasmodium falciparum parasitized erythrocytes and it binds long chain fatty acids and may function in the transport and/or as a regulator of fatty acid transport. Mutations in this gene cause platelet glycoprotein deficiency. Multiple alternatively spliced transcript variants have been found for this gene.

Recommended Dilutions

WB	1:500 - 1:1000
IHC-P	1:50 - 1:200

Immunogen Information

Gene ID

948

Swiss Prot

P16671

Immunogen

A synthetic peptide corresponding to a sequence within amino acids 50-150 of human CD36/SR-B3 (NP_000063.2).

Synonyms

FAT; GP4; GP3B; GPIV; CHDS7; PASIV; SCARB3; BDPLT10; CD36/SR-B3

Contact



www.abclonal.com

Product Information

Source

Rabbit

Isotype

IgG

Purification

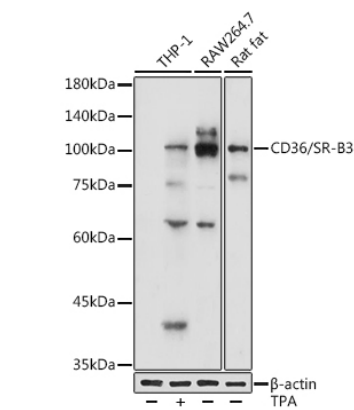
Affinity purification

Storage

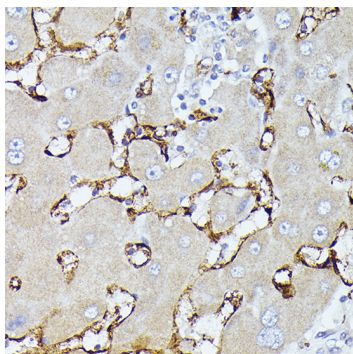
Store at -20°C. Avoid freeze / thaw cycles.

Buffer: PBS with 0.05% proclin300, 50% glycerol, pH7.3.

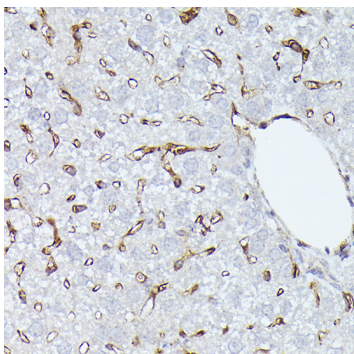
Validation Data



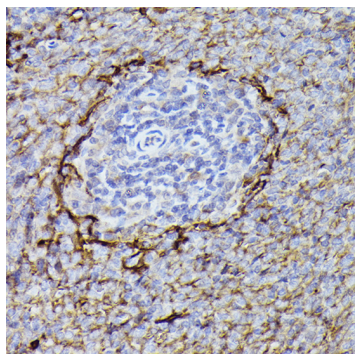
Western blot analysis of various lysates using CD36/SR-B3 Rabbit pAb (A17339) at 1:1000 dilution. THP-1 cells were treated by PMA/TPA (200 nM) at 37°C for 15 minutes after serum-starvation overnight. Secondary antibody: HRP Goat Anti-Rabbit IgG (H+L) (AS014) at 1:10000 dilution. Lysates/proteins: 25µg per lane. Blocking buffer: 3% nonfat dry milk in TBST. Detection: ECL Basic Kit (RM00020). Exposure time: 10s.



Immunohistochemistry analysis of CD36/SR-B3 in paraffin-embedded human liver using CD36/SR-B3 Rabbit pAb (A17339) at dilution of 1:100 (40x lens). Perform high pressure antigen retrieval with 10 mM citrate buffer pH 6.0 before commencing with IHC staining protocol.



Immunohistochemistry analysis of CD36/SR-B3 in paraffin-embedded mouse liver using CD36/SR-B3 Rabbit pAb (A17339) at dilution of 1:100 (40x lens). Perform high pressure antigen retrieval with 10 mM citrate buffer pH 6.0 before commencing with IHC staining protocol.



Immunohistochemistry analysis of CD36/SR-B3 in paraffin-embedded rat spleen using CD36/SR-B3 Rabbit pAb (A17339) at dilution of 1:100 (40x lens). Perform high pressure antigen retrieval with 10 mM citrate buffer pH 6.0 before commencing with IHC staining protocol.