

A17316

Leader in Biomolecular Solutions for Life Science



# Interferon alpha 2 (IFN- $\alpha$ 2) Rabbit pAb

Catalog No.: A17316

## Basic Information

### Observed MW

15kDa

### Calculated MW

22kDa

### Category

Polyclonal Antibody

### Applications

WB, ELISA

### Cross-Reactivity

Human, Mouse

## Background

This gene is a member of the alpha interferon gene cluster on chromosome 9. The encoded cytokine is a member of the type I interferon family that is produced in response to viral infection as a key part of the innate immune response with potent antiviral, antiproliferative and immunomodulatory properties. This cytokine, like other type I interferons, binds a plasma membrane receptor made of IFNAR1 and IFNAR2 that is ubiquitously expressed, and thus is able to act on virtually all body cells. The encoded protein is effective in reducing the symptoms and duration of the common cold and in treating many types of cancer, including some hematological malignancies and solid tumors. A deficiency of type I interferon in the blood is thought to be a hallmark of severe COVID-19 and may provide a rationale for a combined therapeutic approach.

## Recommended Dilutions

WB 1:500 - 1:2000

## Immunogen Information

### Gene ID

3440

### Swiss Prot

P01563

### Immunogen

A synthetic peptide corresponding to a sequence within amino acids 100 to the C-terminus of human Interferon alpha 2 (IFN- $\alpha$ 2) (NP\_000596.2).

### Synonyms

IFNA; IFNA2B; IeIF A; IFN-alphaA; IFN-alpha-2; Interferon alpha 2 (IFN- $\alpha$ 2)

## Contact



[www.abclonal.com](http://www.abclonal.com)

## Product Information

### Source

Rabbit

### Isotype

IgG

### Purification

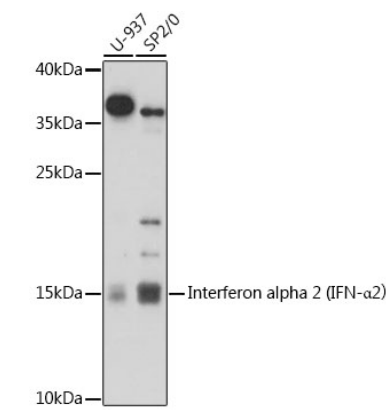
Affinity purification

### Storage

Store at -20°C. Avoid freeze / thaw cycles.

Buffer: PBS with 0.01% thimerosal, 50% glycerol, pH7.3.

Validation Data



Western blot analysis of various lysates using Interferon alpha 2 (IFN-α2) Rabbit pAb (A17316) at 1:1000 dilution.  
Secondary antibody: HRP Goat Anti-Rabbit IgG (H+L) (AS014) at 1:10000 dilution.  
Lysates/proteins: 25µg per lane.  
Blocking buffer: 3% nonfat dry milk in TBST.  
Detection: ECL Basic Kit (RM00020).  
Exposure time: 90s.