

A17295

Leader in Biomolecular Solutions for Life Science



BMPR1B Rabbit pAb

Catalog No.: A17295

Basic Information

Observed MW

Refer to figures

Calculated MW

57kDa

Category

Mouse Monoclonal Antibody

Applications

IHC-P,IF/ICC,ELISA

Cross-Reactivity

Human,Mouse,Rat

Background

This gene encodes a member of the bone morphogenetic protein (BMP) receptor family of transmembrane serine/threonine kinases. The ligands of this receptor are BMPs, which are members of the TGF-beta superfamily. BMPs are involved in endochondral bone formation and embryogenesis. These proteins transduce their signals through the formation of heteromeric complexes of 2 different types of serine (threonine) kinase receptors: type I receptors of about 50-55 kD and type II receptors of about 70-80 kD. Type II receptors bind ligands in the absence of type I receptors, but they require their respective type I receptors for signaling, whereas type I receptors require their respective type II receptors for ligand binding. Mutations in this gene have been associated with primary pulmonary hypertension. Several transcript variants encoding two different isoforms have been found for this gene.

Recommended Dilutions

IHC-P	1:50 - 1:200
IF/ICC	1:500 - 1:1000

Immunogen Information

Gene ID

658

Swiss Prot

O00238

Immunogen

A synthetic peptide corresponding to a sequence within amino acids 1-126 of human BMPR1B (NP_001194.1).

Synonyms

ALK6; AMD3; AMDD; BDA2; ALK-6; BDA1D; CDw293; BMPR1B

Contact



www.abclonal.com

Product Information

Source

Rabbit

Isotype

IgG

Purification

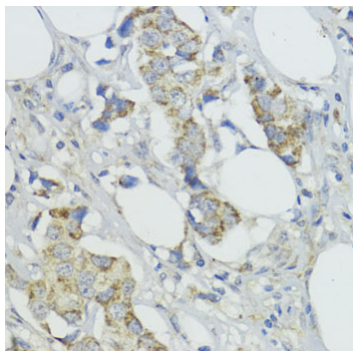
Affinity purification

Storage

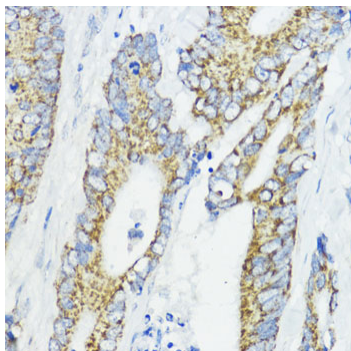
Store at -20°C. Avoid freeze / thaw cycles.

Buffer: PBS with 0.01% thimerosal, 50% glycerol, pH7.3.

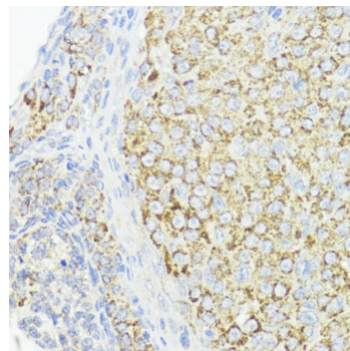
Validation Data



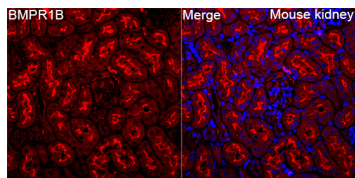
Immunohistochemistry analysis of BMPR1B in paraffin-embedded human mammary cancer using BMPR1B Rabbit pAb (A17295) at dilution of 1:200 (40x lens). Perform microwave antigen retrieval with 10 mM PBS buffer pH 7.2 before commencing with IHC staining protocol.



Immunohistochemistry analysis of BMPR1B in paraffin-embedded human colon carcinoma using BMPR1B Rabbit pAb (A17295) at dilution of 1:200 (40x lens). Perform microwave antigen retrieval with 10 mM PBS buffer pH 7.2 before commencing with IHC staining protocol.



Immunohistochemistry analysis of BMPR1B in paraffin-embedded rat ovary using BMPR1B Rabbit pAb (A17295) at dilution of 1:200 (40x lens). Perform microwave antigen retrieval with 10 mM PBS buffer pH 7.2 before commencing with IHC staining protocol.



Immunofluorescence analysis of Mouse kidney tissue using BMPR1B Rabbit pAb (A17295) at a dilution of 1:600 (40x lens). Secondary antibody: Cy3-conjugated Goat anti-Rabbit IgG (H+L) (AS007) at 1:500 dilution. Blue: DAPI for nuclear staining. High pressure antigen retrieval performed with 0.01M Citrate Buffer (pH 6.0) prior to IF staining.