

A17291

Leader in Biomolecular Solutions for Life Science



## MAPK1/MAPK3 Rabbit pAb

Catalog No.: A17291

### Basic Information

#### Observed MW

44kDa

#### Calculated MW

36kDa/41kDa/38kDa/40kDa/43kDa

#### Category

Polyclonal Antibody

#### Applications

WB, IHC-P, ELISA

#### Cross-Reactivity

Human, Mouse, Rat

### Background

MAP kinases, also known as extracellular signal-regulated kinases (ERKs), act as an integration point for multiple biochemical signals, and are involved in a wide variety of cellular processes such as proliferation, differentiation, transcription regulation and development. The activation of this kinase requires its phosphorylation by upstream kinases. Upon activation, this kinase translocates to the nucleus of the stimulated cells, where it phosphorylates nuclear targets.

### Recommended Dilutions

WB	1:500 - 1:2000
IHC-P	1:50 - 1:200

### Immunogen Information

#### Gene ID

5594/5595

#### Swiss Prot

P28482/P27361

#### Immunogen

A synthetic peptide corresponding to a sequence within amino acids 200-300 of human MAPK1/MAPK3ERK1/2 (P27361/P28482).

#### Synonyms

MAPK1/MAPK3

### Contact



[www.abclonal.com](http://www.abclonal.com)

### Product Information

#### Source

Rabbit

#### Isotype

IgG

#### Purification

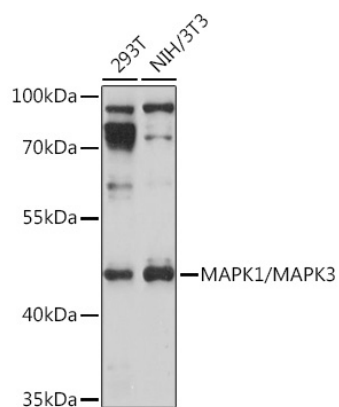
Affinity purification

#### Storage

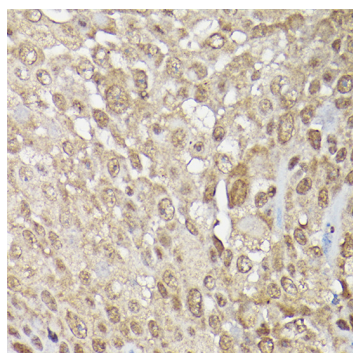
Store at -20°C. Avoid freeze / thaw cycles.

Buffer: PBS with 0.01% thimerosal, 50% glycerol, pH7.3.

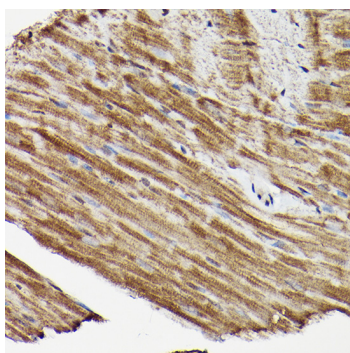
## Validation Data



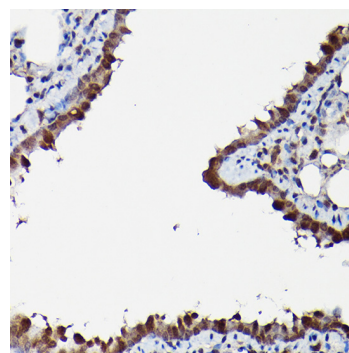
Western blot analysis of various lysates using MAPK1/MAPK3 Rabbit pAb (A17291) at 1:1000 dilution. Secondary antibody: HRP Goat Anti-Rabbit IgG (H+L) (A5014) at 1:10000 dilution. Lysates/proteins: 25µg per lane. Blocking buffer: 3% nonfat dry milk in TBST. Detection: ECL Basic Kit (RM00020). Exposure time: 10s.



Immunohistochemistry analysis of MAPK1/MAPK3 in paraffin-embedded human urothelial carcinoma using MAPK1/MAPK3 Rabbit pAb (A17291) at dilution of 1:200 (40x lens). Perform high pressure antigen retrieval with 10 mM citrate buffer pH 6.0 before commencing with IHC staining protocol.



Immunohistochemistry analysis of MAPK1/MAPK3 in paraffin-embedded mouse heart using MAPK1/MAPK3 Rabbit pAb (A17291) at dilution of 1:200 (40x lens). Perform high pressure antigen retrieval with 10 mM citrate buffer pH 6.0 before commencing with IHC staining protocol.



Immunohistochemistry analysis of MAPK1/MAPK3 in paraffin-embedded rat lung using MAPK1/MAPK3 Rabbit pAb (A17291) at dilution of 1:200 (40x lens). Perform high pressure antigen retrieval with 10 mM citrate buffer pH 6.0 before commencing with IHC staining protocol.