

A17220

Leader in Biomolecular Solutions for Life Science



## ANP32E Rabbit pAb

Catalog No.: A17220

1 Publications

### Basic Information

#### Observed MW

31kDa

#### Calculated MW

31kDa

#### Category

Polyclonal Antibody

#### Applications

WB, ELISA

#### Cross-Reactivity

Human, Mouse, Rat

### Background

Enables histone binding activity. Involved in histone exchange. Located in nucleus. Part of Swr1 complex.

### Recommended Dilutions

WB 1:500 - 1:2000

### Immunogen Information

#### Gene ID

81611

#### Swiss Prot

Q9BTT0

#### Immunogen

Recombinant fusion protein containing a sequence corresponding to amino acids 1-70 of human ANP32E (NP\_112182.1).

#### Synonyms

LANPL; LANP-L; ANP32E

### Contact



[www.abclonal.com](http://www.abclonal.com)

### Product Information

#### Source

Rabbit

#### Isotype

IgG

#### Purification

Affinity purification

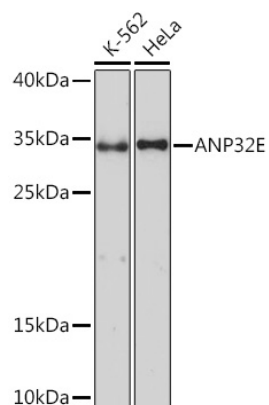
#### Storage

Store at -20°C. Avoid freeze / thaw cycles.

Buffer: PBS with 0.01% thimerosal, 50% glycerol, pH 7.3.

## Validation Data

---



Western blot analysis of various lysates using ANP32E Rabbit pAb (A17220) at 1:1000 dilution.  
Secondary antibody: HRP Goat Anti-Rabbit IgG (H+L) (A5014) at 1:10000 dilution.  
Lysates/proteins: 25µg per lane.  
Blocking buffer: 3% nonfat dry milk in TBST.  
Detection: ECL Basic Kit (RM00020).  
Exposure time: 10s.