

A17045

Leader in Biomolecular Solutions for Life Science



## ATG12 Rabbit pAb

Catalog No.: A17045

### Basic Information

**Observed MW**

55kDa

**Calculated MW**

15kDa

**Category**

Polyclonal Antibody

**Applications**

WB, ELISA

**Cross-Reactivity**

Rat

### Background

Autophagy is a process of bulk protein degradation in which cytoplasmic components, including organelles, are enclosed in double-membrane structures called autophagosomes and delivered to lysosomes or vacuoles for degradation. ATG12 is the human homolog of a yeast protein involved in autophagy (Mizushima et al., 1998 [PubMed 9852036]).

### Recommended Dilutions

WB 1:500 - 1:1000

### Immunogen Information

**Gene ID**

9140

**Swiss Prot**

O94817

**Immunogen**

A synthetic peptide corresponding to a sequence within amino acids 1-74 of human ATG12 (NP\_001264712.1).

**Synonyms**

APG12; FBR93; APG12L; HAPG12; ATG12

### Contact



[www.abclonal.com](http://www.abclonal.com)

### Product Information

**Source**

Rabbit

**Isotype**

IgG

**Purification**

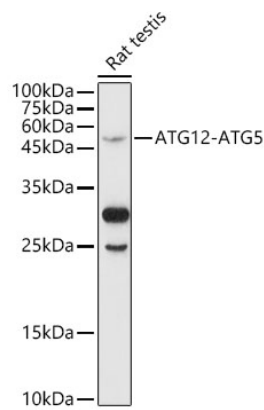
Affinity purification

**Storage**

Store at -20°C. Avoid freeze / thaw cycles.

Buffer: PBS with 0.01% thimerosal, 50% glycerol, pH 7.3.

Validation Data



Western blot analysis of lysates from Rat testis, using ATG12 Rabbit pAb (A17045) at 1:1000 dilution.  
Secondary antibody: HRP Goat Anti-Rabbit IgG (H+L) (AS014) at 1:10000 dilution.  
Lysates/proteins: 25µg per lane.  
Blocking buffer: 3% nonfat dry milk in TBST.  
Detection: ECL Basic Kit (RM00020).  
Exposure time: 180s.