

A17003

Leader in Biomolecular Solutions for Life Science



WIPF1 Rabbit pAb

Catalog No.: A17003

Basic Information

Observed MW

51kDa

Calculated MW

51kDa

Category

Polyclonal Antibody

Applications

WB, IHC-P, ELISA

Cross-Reactivity

Human, Mouse, Rat

Background

This gene encodes a protein that plays an important role in the organization of the actin cytoskeleton. The encoded protein binds to a region of Wiskott-Aldrich syndrome protein that is frequently mutated in Wiskott-Aldrich syndrome, an X-linked recessive disorder. Impairment of the interaction between these two proteins may contribute to the disease. Two transcript variants encoding the same protein have been identified for this gene.

Recommended Dilutions

WB	1:500 - 1:2000
IHC-P	1:100 - 1:200

Immunogen Information

Gene ID

7456

Swiss Prot

O43516

Immunogen

A synthetic peptide corresponding to a sequence within amino acids 400-500 of human WIPF1 (NP_001070737.1).

Synonyms

WIP; WAS2; PRPL-2; WASPIP; WIPF1

Contact



www.abclonal.com

Product Information

Source

Rabbit

Isotype

IgG

Purification

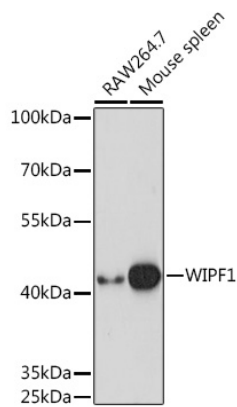
Affinity purification

Storage

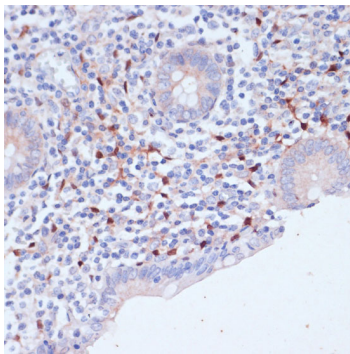
Store at -20°C. Avoid freeze / thaw cycles.

Buffer: PBS with 0.01% thimerosal, 50% glycerol, pH 7.3.

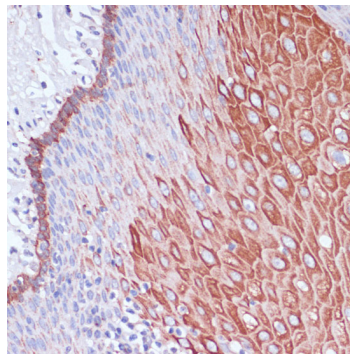
Validation Data



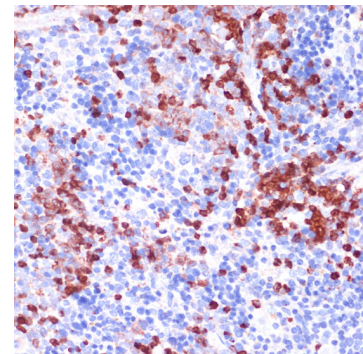
Western blot analysis of various lysates using WIPF1 Rabbit pAb (A17003) at 1:1000 dilution.
Secondary antibody: HRP Goat Anti-Rabbit IgG (H+L) (AS014) at 1:10000 dilution.
Lysates/proteins: 25µg per lane.
Blocking buffer: 3% nonfat dry milk in TBST.
Detection: ECL Basic Kit (RM00020).
Exposure time: 10s.



Immunohistochemistry analysis of WIPF1 in paraffin-embedded human appendix using WIPF1 Rabbit pAb (A17003) at dilution of 1:100 (40x lens). Perform microwave antigen retrieval with 10 mM PBS buffer pH 7.2 before commencing with IHC staining protocol.



Immunohistochemistry analysis of WIPF1 in paraffin-embedded human esophageal using WIPF1 Rabbit pAb (A17003) at dilution of 1:100 (40x lens). Perform microwave antigen retrieval with 10 mM PBS buffer pH 7.2 before commencing with IHC staining protocol.



Immunohistochemistry analysis of WIPF1 in paraffin-embedded mouse spleen using WIPF1 Rabbit pAb (A17003) at dilution of 1:100 (40x lens). Perform microwave antigen retrieval with 10 mM PBS buffer pH 7.2 before commencing with IHC staining protocol.