

A16998

Leader in Biomolecular Solutions for Life Science



## SCGB1A1 Rabbit pAb

Catalog No.: A16998

### Basic Information

#### Observed MW

Refer to figures

#### Calculated MW

10kDa

#### Category

Polyclonal Antibody

#### Applications

IHC-P,IF/ICC,ELISA

#### Cross-Reactivity

Mouse,Rat

### Background

This gene encodes a member of the secretoglobin family of small secreted proteins. The encoded protein has been implicated in numerous functions including anti-inflammation, inhibition of phospholipase A2 and the sequestering of hydrophobic ligands. Defects in this gene are associated with a susceptibility to asthma.

### Recommended Dilutions

IHC-P	1:50 - 1:200
IF/ICC	1:50 - 1:200

### Immunogen Information

Gene ID	Swiss Prot
7356	P11684

#### Immunogen

Recombinant fusion protein containing a sequence corresponding to amino acids 22-91 of human SCGB1A1 (NP\_003348.1).

#### Synonyms

UGB; UP1; CC10; CC16; CCSP; UP-1; CCPBP; SCGB1A1

### Contact



[www.abclonal.com](http://www.abclonal.com)

### Product Information

Source	Isotype	Purification
Rabbit	IgG	Affinity purification

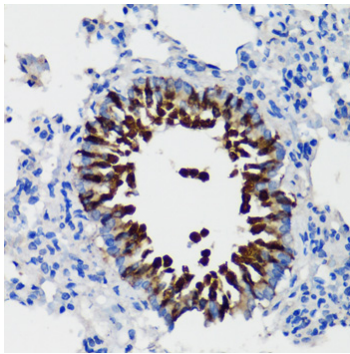
#### Storage

Store at -20°C. Avoid freeze / thaw cycles.

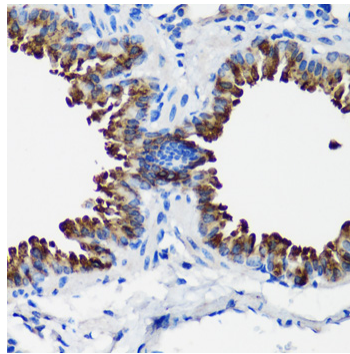
Buffer: PBS with 0.01% thimerosal,50% glycerol,pH7.3.

## Validation Data

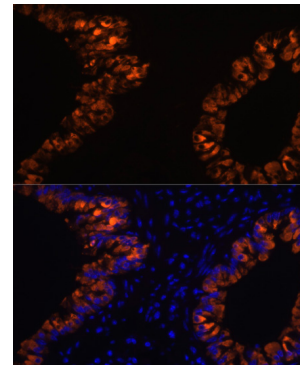
---



Immunohistochemistry analysis of SCGB1A1 in paraffin-embedded rat lung using SCGB1A1 Rabbit pAb (A16998) at dilution of 1:100 (40x lens). Perform microwave antigen retrieval with 10 mM PBS buffer pH 7.2 before commencing with IHC staining protocol.



Immunohistochemistry analysis of SCGB1A1 in paraffin-embedded mouse lung using SCGB1A1 Rabbit pAb (A16998) at dilution of 1:100 (40x lens). Perform microwave antigen retrieval with 10 mM PBS buffer pH 7.2 before commencing with IHC staining protocol.



Immunofluorescence analysis of paraffin-embedded mouse lung using SCGB1A1 Rabbit pAb (A16998) at dilution of 1:100. Secondary antibody: Cy3 Goat Anti-Rabbit IgG (H+L) (AS007) at 1:500 dilution. Blue: DAPI for nuclear staining.