

A16991

Leader in Biomolecular Solutions for Life Science



TRAF6 Rabbit pAb

Catalog No.: A16991

4 Publications

Basic Information

Observed MW

60kDa

Calculated MW

60kDa

Category

Polyclonal Antibody

Applications

WB, IF/ICC, ELISA

Cross-Reactivity

Human, Mouse, Rat

Background

The protein encoded by this gene is a member of the TNF receptor associated factor (TRAF) protein family. TRAF proteins are associated with, and mediate signal transduction from, members of the TNF receptor superfamily. This protein has an amino terminal RING domain which is followed by four zinc-finger motifs, a central coiled-coil region and a highly conserved carboxyl terminal domain, known as the TRAF-C domain and mediates signaling from members of the TNF receptor superfamily as well as the Toll/IL-1 family. Signals from receptors such as CD40, TNFSF11/RANCE and IL-1 have been shown to be mediated by this protein. This protein also interacts with various protein kinases including IRAK1/IRAK, SRC and PKCzeta, which provides a link between distinct signaling pathways. This protein functions as a signal transducer in the NF-kappaB pathway that activates IkappaB kinase (IKK) in response to proinflammatory cytokines. The interaction of this protein with UBE2N/UBC13, and UBE2V1/UEV1A, which are ubiquitin conjugating enzymes catalyzing the formation of polyubiquitin chains, has been found to be required for IKK activation by this protein. This protein also interacts with the transforming growth factor (TGF) beta receptor complex and is required for Smad-independent activation of the JNK and p38 kinases. The protein encoded by this gene is a key molecule in antiviral innate and antigen-specific immune responses.

Recommended Dilutions

WB 1:500 - 1:1000

IF/ICC 1:50 - 1:200

Immunogen Information

Gene ID

7189

Swiss Prot

Q9Y4K3

Immunogen

A synthetic peptide corresponding to a sequence within amino acids 50-150 of human TRAF6 (NP_004611.1).

Synonyms

RNF85; MGC:3310; TRAF6

Contact



www.abclonal.com

Product Information

Source

Rabbit

Isotype

IgG

Purification

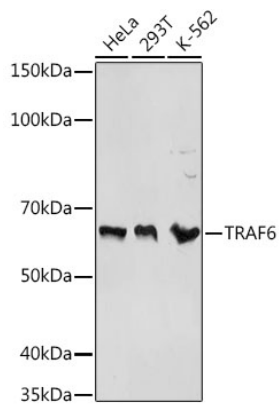
Affinity purification

Storage

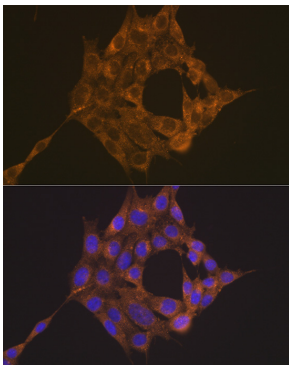
Store at -20°C. Avoid freeze / thaw cycles.

Buffer: PBS with 0.05% proclin300, 50% glycerol, pH7.3.

Validation Data



Western blot analysis of extracts of various cell lines, using TRAF6 antibody (A16991) at 1:1000 dilution.
Secondary antibody: HRP Goat Anti-Rabbit IgG (H+L) (A5014) at 1:10000 dilution.
Lysates/proteins: 25µg per lane.
Blocking buffer: 3% nonfat dry milk in TBST.
Detection: ECL Basic Kit (RM00020).
Exposure time: 90s.



Immunofluorescence analysis of NIH-3T3 cells using TRAF6 Rabbit pAb (A16991) at dilution of 1:100 (40x lens). Blue: DAPI for nuclear staining.